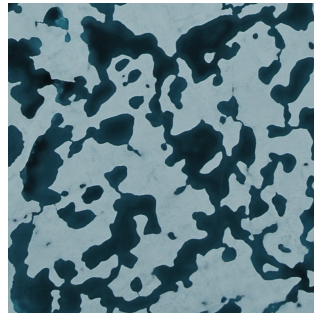
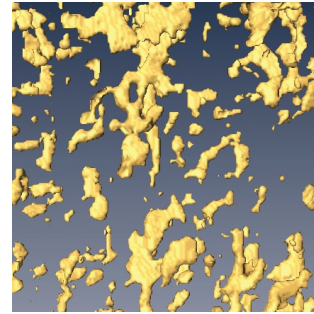


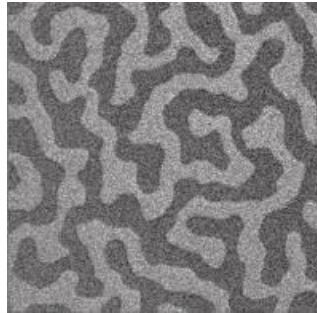
magnetic domains
in cobalt



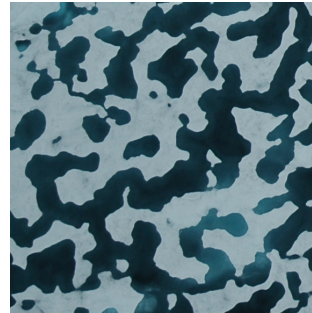
Arctic melt ponds



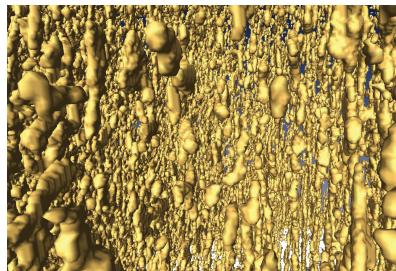
brine inclusions



magnetic domains
in cobalt-iron-boron

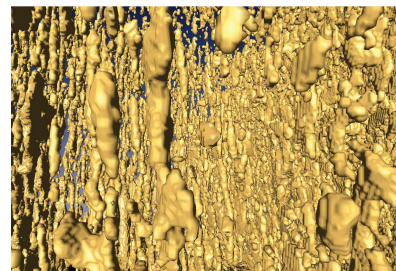


Arctic melt ponds



brine inclusions

$T = -8^{\circ}\text{C}$, $\phi = 0.057$

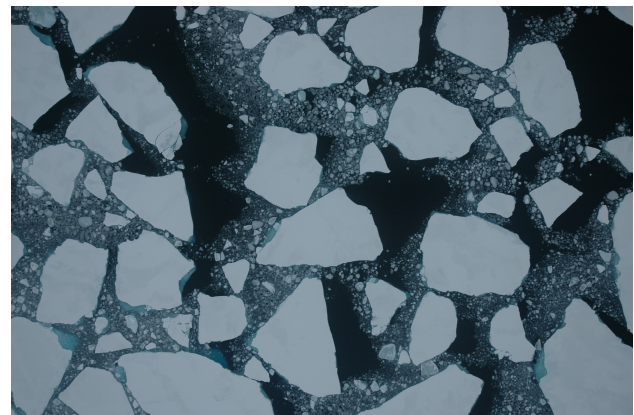


brine inclusions

$T = -4^{\circ}\text{C}$, $\phi = 0.113$



pancake ice forming in Antarctica



Arctic sea ice floes

the sea ice pack is a fractal gas of interacting, diffusing particles