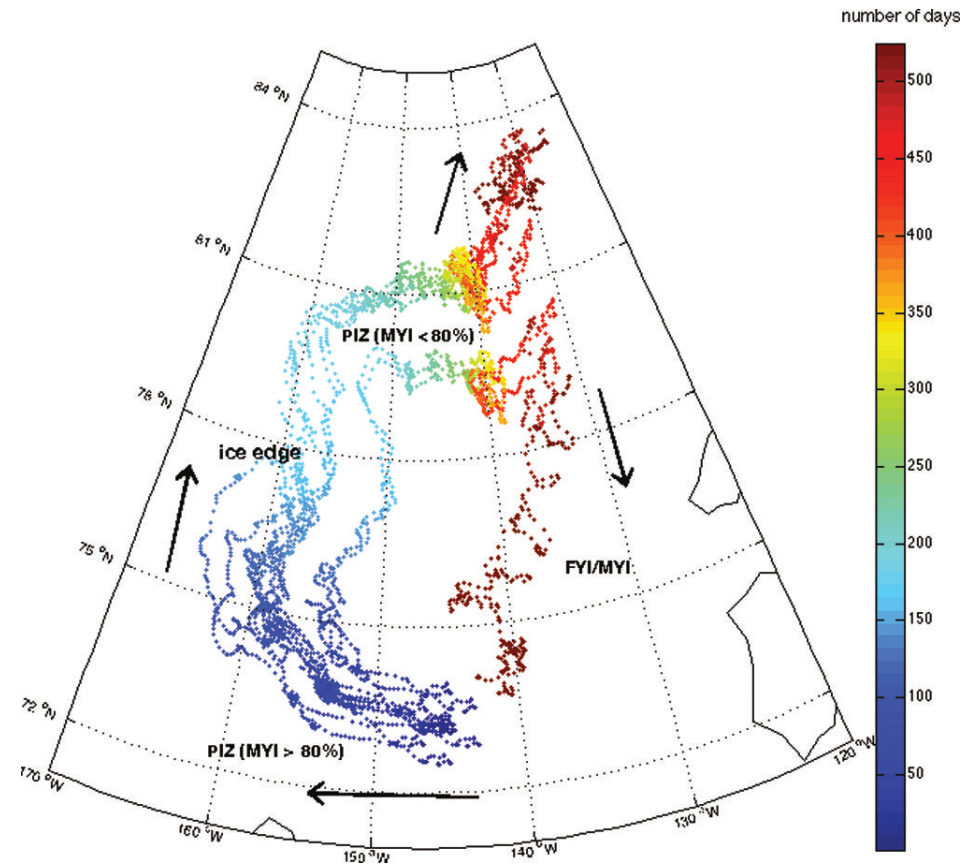


Anomalous diffusion in sea ice dynamics

Ice floe diffusion in winds and currents

Jennifer Lukovich, Jennifer Hutchings,
David Barber, *Ann. Glac.* 2015



- On short time scales floes observed (buoy data) to exhibit Brownian-like behavior, but they are also being advected by winds and currents.
- Effective behavior is purely diffusive, sub-diffusive or super-diffusive depending on ice pack and advective conditions - **Hurst exponent**.