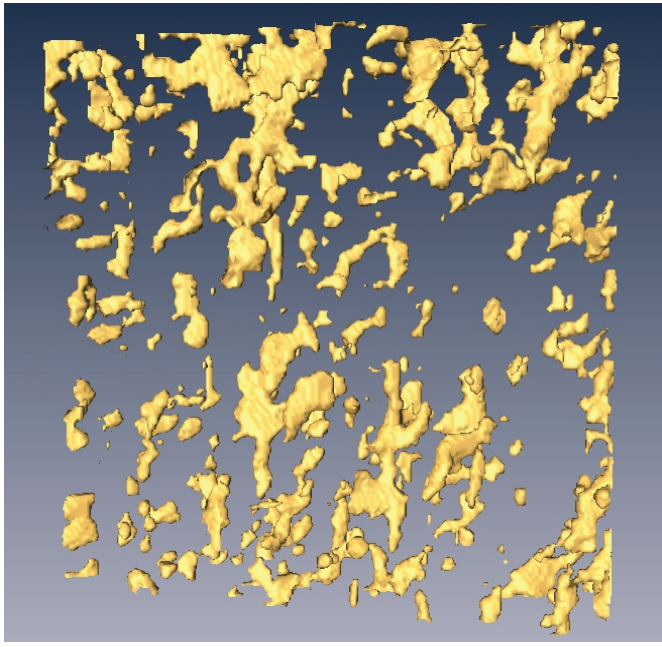
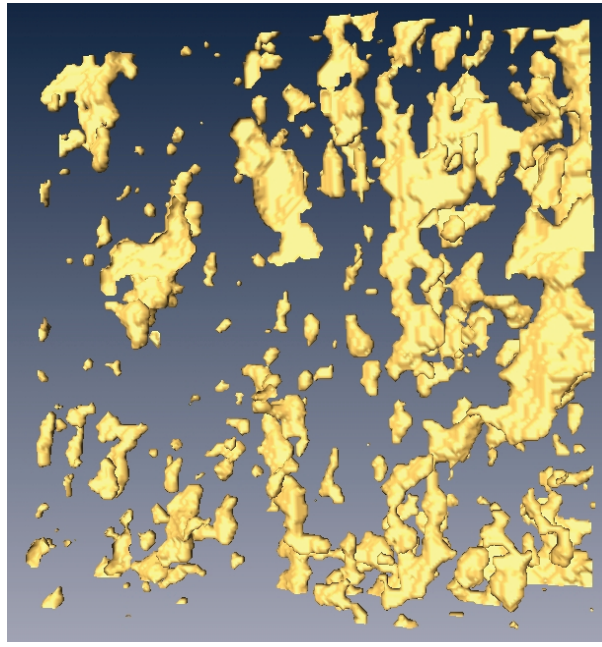


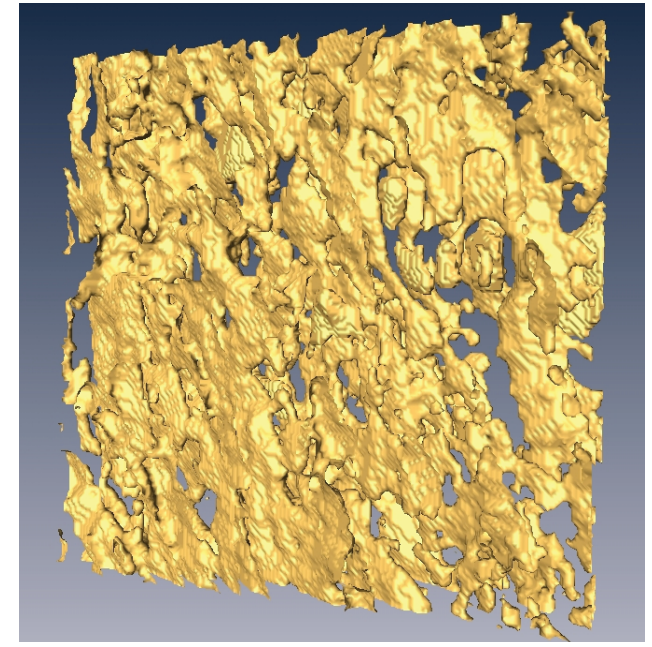
brine volume fraction and **connectivity** increase with temperature



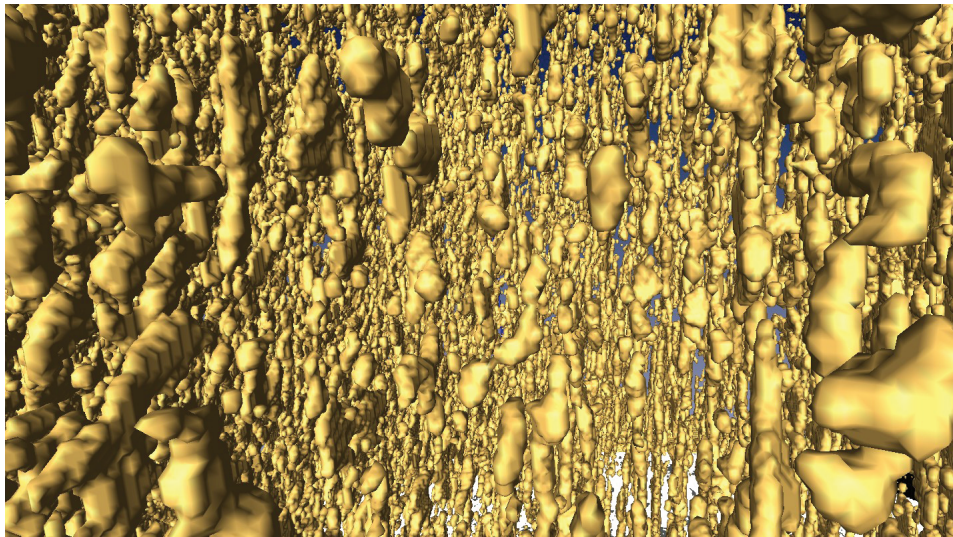
$T = -15\text{ }^{\circ}\text{C}$, $\phi = 0.033$



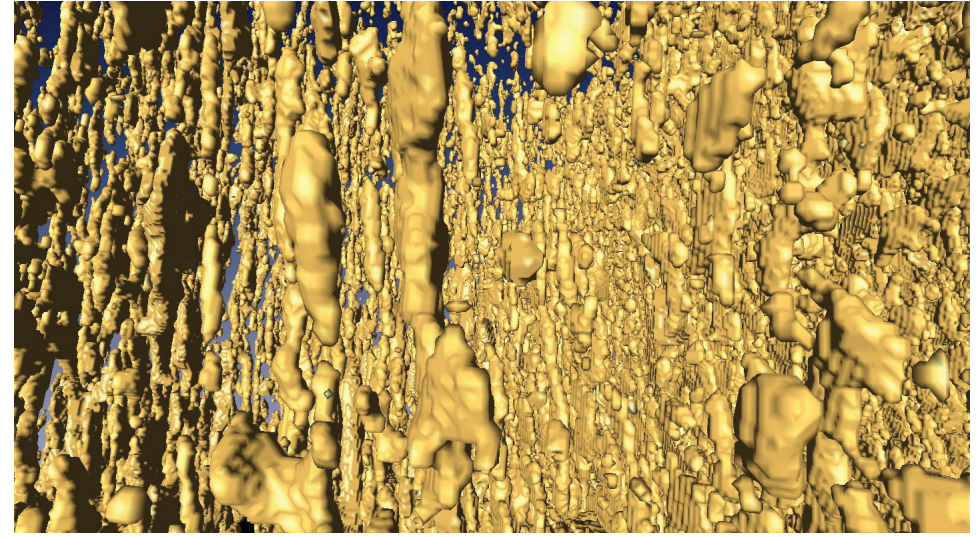
$T = -6\text{ }^{\circ}\text{C}$, $\phi = 0.075$



$T = -3\text{ }^{\circ}\text{C}$, $\phi = 0.143$



$T = -8\text{ }^{\circ}\text{C}$, $\phi = 0.057$



$T = -4\text{ }^{\circ}\text{C}$, $\phi = 0.113$

X-ray tomography for brine in sea ice

Golden, Eicken, Heaton, Miner, Pringle and Zhu, *GRL*, 2007