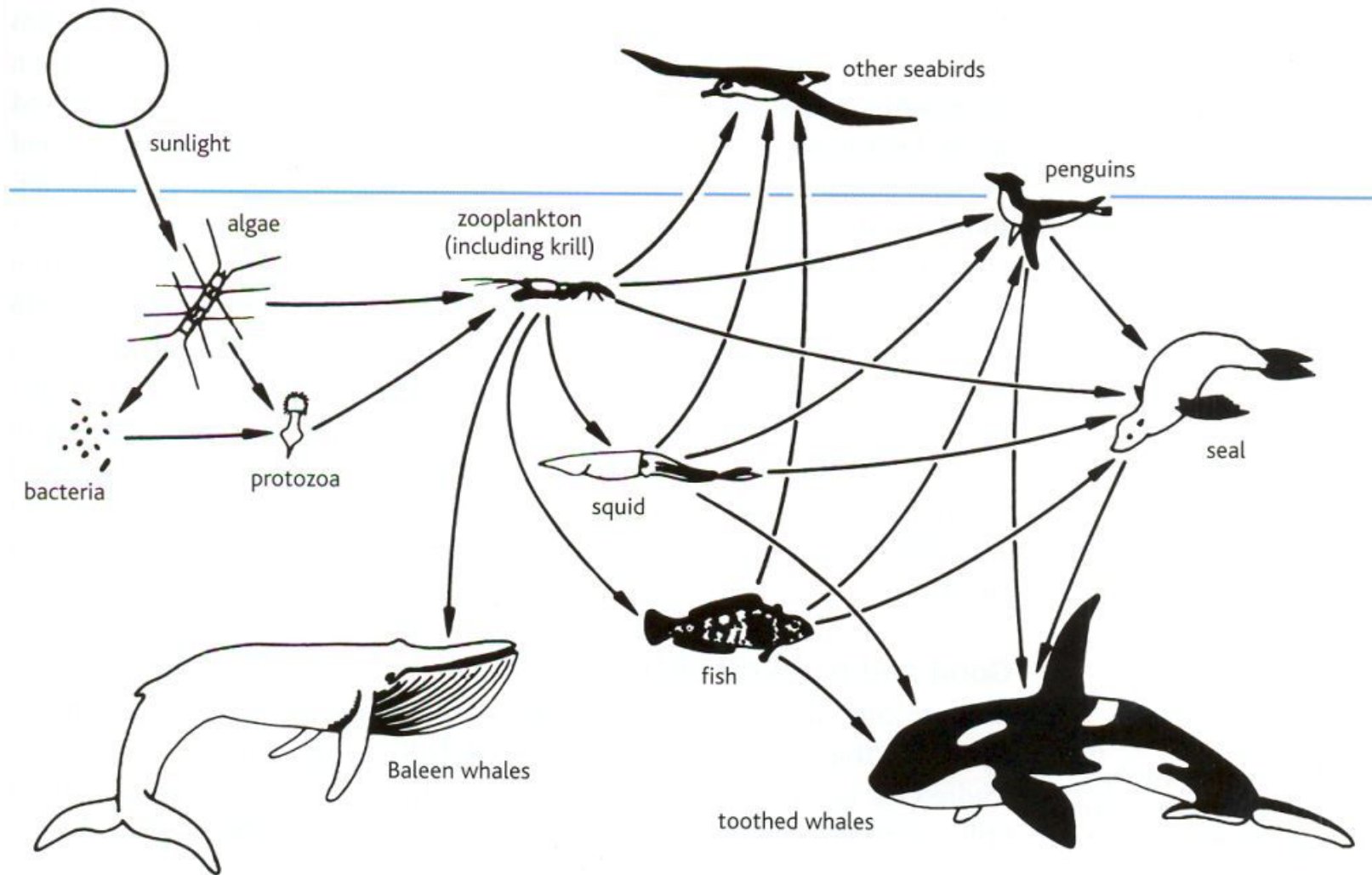


# sea ice ecosystem

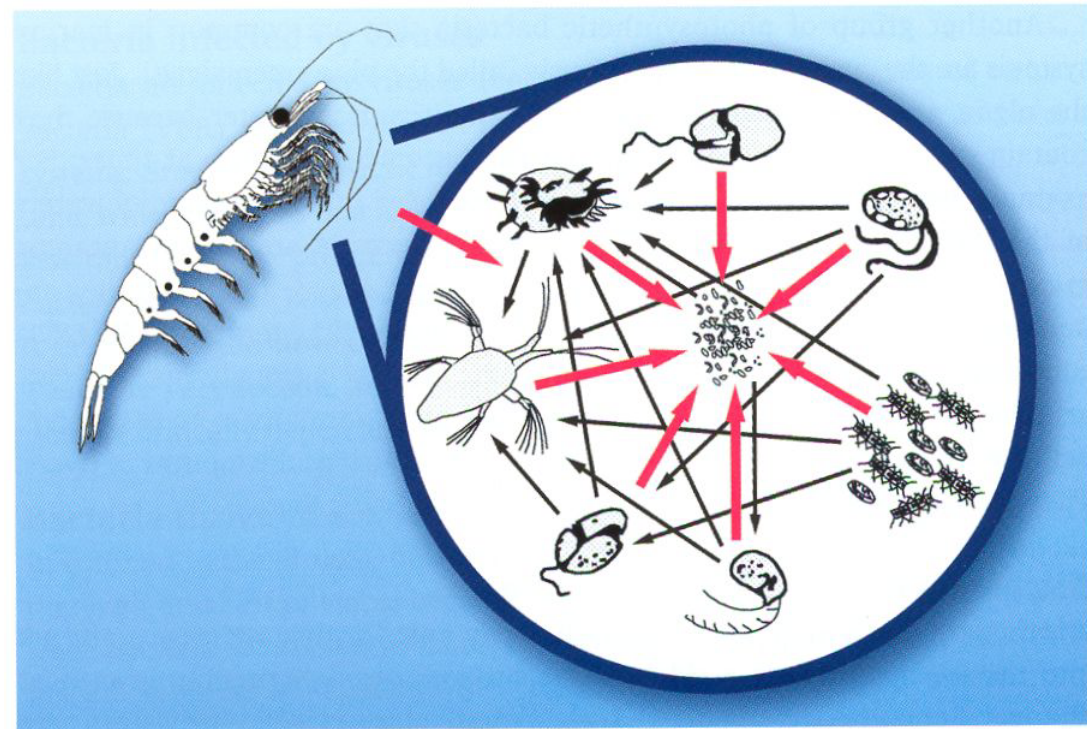
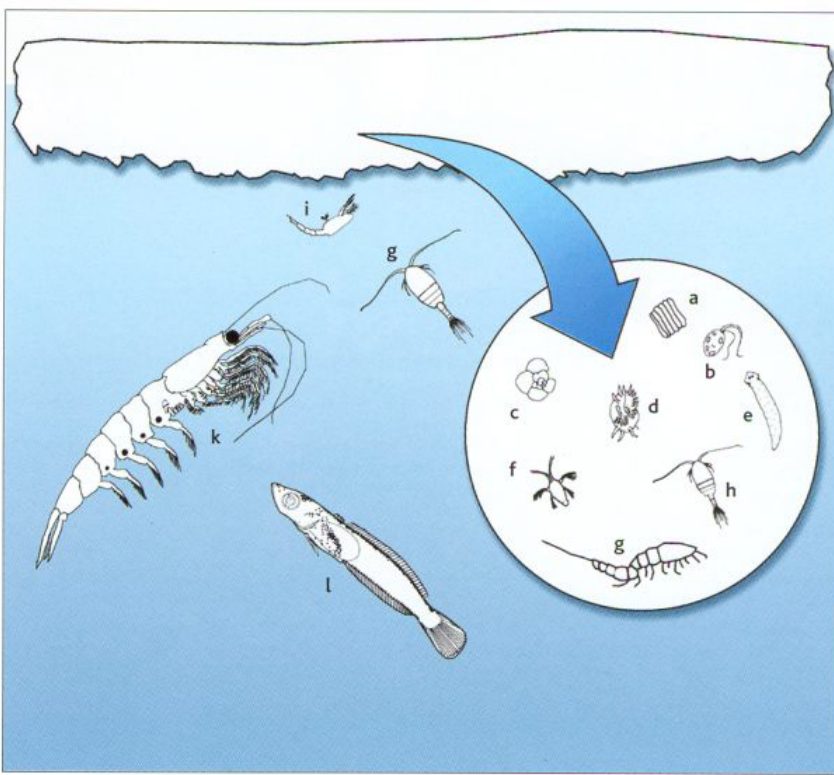


sea ice algae  
support life in the polar oceans

# Antarctic marine food web

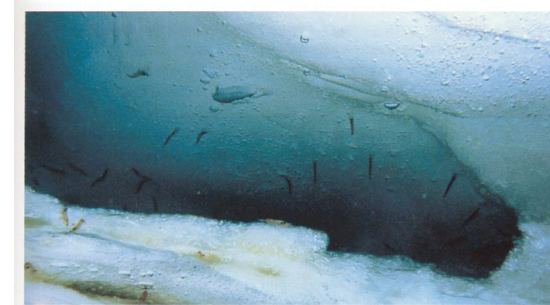






all organisms in food web produce dissolved organic matter which fuels bacterial growth in the ice

life within and at the edges of Antarctic sea ice floes



krill



(a) diatoms (b) flagellates (c) foraminiferans (d) ciliates  
(e) turbellarians (f) crustaceans (g,h) copepods (i) crustacean larvae (k) krill (l) young fish (bottom) amphipod *Gammarus wilkitzkii*