

Math 2280 - Lecture 14

Dylan Zwick

Spring 2014

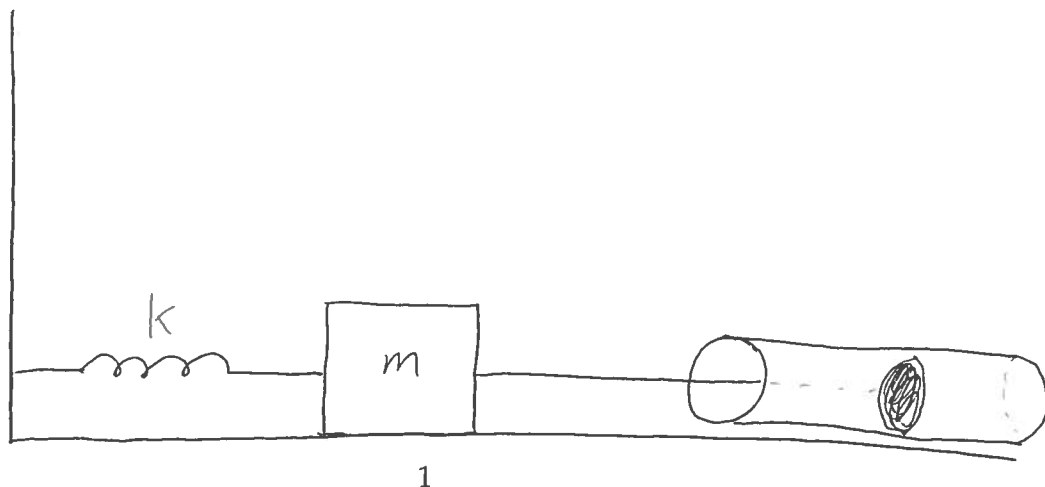
In today's lecture we're going to examine, in detail, a physical system whose behavior is modeled by a second-order linear ODE with constant coefficients. We'll examine the different possible solutions, what determines these solutions, and what these solutions mean as far as the behavior of the system is concerned.

The assigned problems for this section are:

Section 3.4 - 1, 5, 18, 21

Simple Mechanical Systems and the Differential Equations that Love Them

Today we're going to examine a fairly simple mechanical system in detail, and look closely at its possible solutions.



We have a mass on a spring connected to a dashpot. The forces on the mass are:

The force from the spring:

$$F_S = -kx.$$

The force from the dashpot:

$$F_R = -cv.$$

An external driving force:

$$F_E = f(t).$$

Today we'll assume that $f(t) = 0$. The inhomogeneous, $f(t) \neq 0$, situation we'll examine in detail in a couple lectures.

According to Newton's second law:

$$m \frac{d^2x}{dt^2} = -c \frac{dx}{dt} - kx.$$

Or, after a little algebra,

$$m \frac{d^2x}{dt^2} + c \frac{dx}{dt} + kx = 0.$$

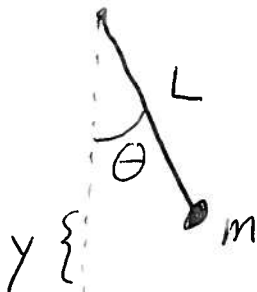
This is a second-order linear homogeneous ODE with constant coefficients. We can rewrite this as:¹

$$\frac{d^2x}{dt^2} + \frac{c}{m} \frac{dx}{dt} + \frac{k}{m} x = 0$$

Before solving this, let's take a look at another basic mechanical system; the simple pendulum.

¹Just dividing everything by the mass m .

Bad Drawing:



We can apply the conservation of energy to the pendulum to derive the differential equation:

$$mgy + \frac{1}{2}mL^2 \left(\frac{d\theta}{dt} \right)^2 = C.$$

If we note that $y = L(1 - \cos \theta)$ we get:

$$mgL(1 - \cos \theta) + \frac{1}{2}mL^2 \left(\frac{d\theta}{dt} \right)^2 = C.$$

Differentiating both sides of this we get the equation:

$$mgL \sin \theta \frac{d\theta}{dt} + mL^2 \left(\frac{d\theta}{dt} \right) \left(\frac{d^2\theta}{dt^2} \right) = 0.$$

Dividing through by the common factors we get:

$$\frac{d^2\theta}{dt^2} + \frac{g}{L} \sin \theta = 0.$$

This is *not* a linear ODE. However, if we assume θ is small we can use the approximation $\sin \theta \approx \theta$ to get:

$$\frac{d^2\theta}{dt^2} + \frac{g}{L}\theta = 0.$$

This is, essentially, the same equation we saw before with the mass-spring-dashpot system if we set $c = 0$. A fundamental idea in physics is that the same equations have the same solutions, and so the behavior we witness for the mass-spring-dashpot system will be analogous to the behavior of the pendulum.

The Solutions and What They Mean

The differential equation for the pendulum above has the solutions:

$$\theta(t) = c_1 \cos\left(\sqrt{\frac{g}{L}}t\right) + c_2 \sin\left(\sqrt{\frac{g}{L}}t\right).$$

If we choose:

$$A = \sqrt{c_1^2 + c_2^2}$$

and

$$\cos \phi = \frac{c_1}{A}, \quad \sin \phi = \frac{c_2}{A}$$

then

$$\theta(t) = A \left(\cos \phi \cos\left(\sqrt{\frac{g}{L}}t\right) + \sin \phi \sin\left(\sqrt{\frac{g}{L}}t\right) \right).$$

If we use the relation:

$$\cos(\theta_1 + \theta_2) = \cos \theta_1 \cos \theta_2 - \sin \theta_1 \sin \theta_2$$

we can rewrite $\theta(t)$ as:

$$\theta(t) = A \cos\left(\sqrt{\frac{g}{L}}t - \phi\right).$$

This is the simplified equation for simple harmonic motion. We call the terms:

A = Amplitude,

ϕ = Phase shift,

$$\sqrt{\frac{g}{L}} = \text{Angular frequency} = \omega.$$

From these we define the terms:

$$\text{Frequency : } f = \frac{\omega}{2\pi},$$

$$\text{Period : } T = \frac{1}{f} = \frac{2\pi}{\omega}.$$

Example - Most grandfather clocks have pendulums with adjustable lengths. One such clock loses 10 min per day when the length of its pendulum is 30 in. With what length pendulum will this clock keep perfect time?

Solution - Let k be the expected number of periods per day. So,

$$kT_c = (24\text{hours})((60\text{min}/\text{hour}) = 1440\text{min},$$

where T_c is the correct period. We have:

$$kT = k \left(\frac{2\pi}{\omega} \right) = 1,450\text{min}.$$

So,

$$\frac{T}{T_c} = \frac{1450}{1440} = \frac{\frac{2\pi}{\sqrt{\frac{g}{30\text{in}}}}}{\frac{2\pi}{\sqrt{\frac{g}{L}}}} = \frac{\frac{1}{\sqrt{30}}}{\frac{1}{\sqrt{L}}} = \frac{\sqrt{30}}{\sqrt{L}}.$$

So,

$$L = (30in) \left(\frac{1440}{1450} \right)^2 = 29.59in.$$

Now, if we look again at the mass-spring-dashpot system we examined at the beginning of this lecture we note that we can rewrite the differential equation as:

$$x'' + 2px' + \omega_0^2 x = 0$$

with

$$\omega_0 = \sqrt{\frac{k}{m}} > 0, \text{ and } p = \frac{c}{2m} > 0.$$

If we use the quadratic formula to solve the characteristic equation for this ODE we get:

$$\frac{-2p \pm \sqrt{(2p)^2 - 4\omega_0^2}}{2} = -p \pm \sqrt{p^2 - \omega_0^2}.$$

From this we get three fundamental possibilities, depending on the sign of the *discriminant* $p^2 - \omega_0^2$:

Case 1: Overdamped -

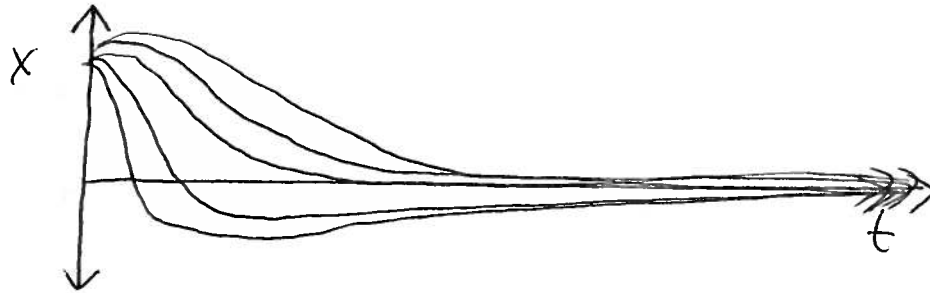
This case occurs when

$$p > \omega_0 \quad \text{a.k.a.} \quad c^2 > 4mk \quad \text{a.k.a.} \quad \text{the discriminant is positive.}$$

In this situation we have 2 real negative roots, and our solution is of the form:

$$x(t) = c_1 e^{r_1 t} + c_2 e^{r_2 t}.$$

Some representative graphs of this situation are below. We note that the solution asymptotically goes to 0 as $t \rightarrow \infty$.



Case 2: Critically Damped -

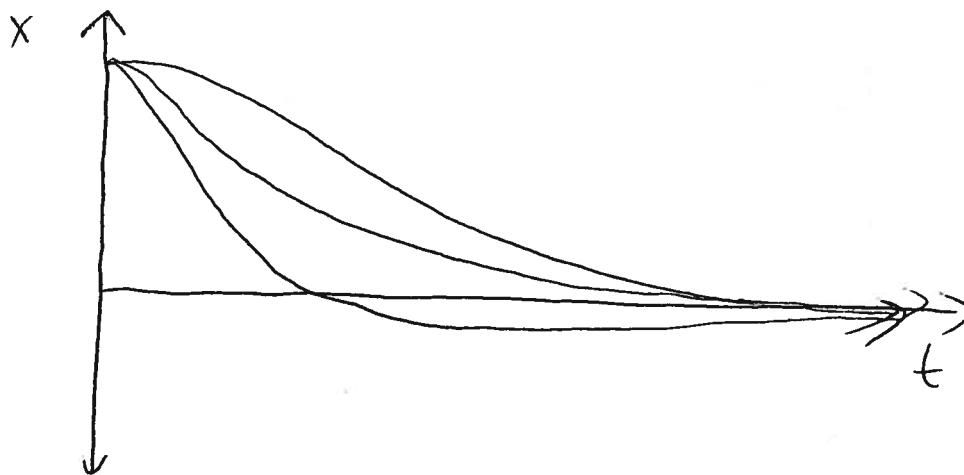
This case occurs when

$$p = \omega_0 \quad \text{a.k.a.} \quad c^2 = 4mk \quad \text{a.k.a.} \quad \text{the discriminant is zero.}$$

In this situation we have one real negative root of multiplicity two and our solution is of the form:

$$x(t) = e^{-rt}(c_1 + c_2 t).$$

Some representative graphs of this situation are below. We note that, again, the solution asymptotically goes to 0 as $t \rightarrow \infty$.



Case 3: Underdamped -

This case occurs when

$$p < \omega_0 \quad \text{a.k.a.} \quad c^2 < 4km \quad \text{a.k.a.} \quad \text{the discriminant is negative.}$$

In this situation we have two complex roots and our solution is of the form:

$$x(t) = e^{-pt}(c_1 \cos(\omega_1 t) + c_2 \sin(\omega_1 t))$$

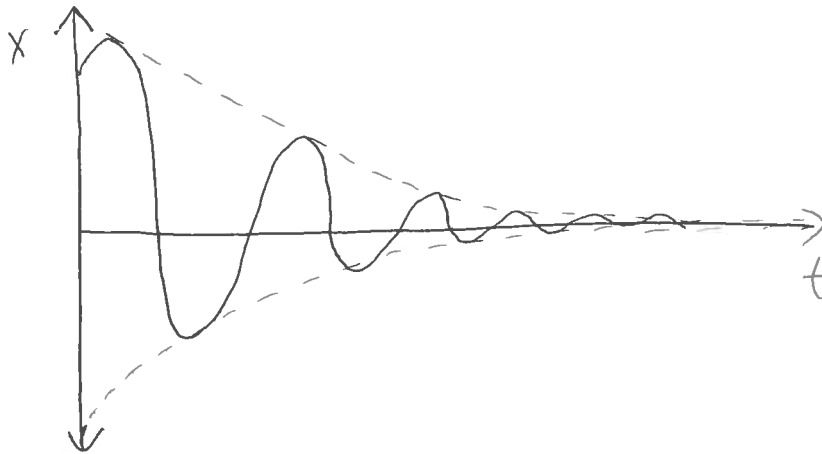
where

$$\omega_1 = \sqrt{\omega_0^2 - p^2} = \frac{\sqrt{4km - c^2}}{2m}.$$

As explained for the pendulum we can rewrite this solution as:

$$x(t) = Ce^{-pt} \cos(\omega_1 t - \alpha).$$

A representative graph of this situation is below. We note, again, that the solution asymptotically approaches 0 as $t \rightarrow \infty$.²



²Unless $p = 0$, in which case we have the behavior for the pendulum we examined earlier.

Example - Solve the ODE that models the mass-spring-dashpot system with the parameters:

$$m = \frac{1}{2}, c = 3, k = 4,$$

$$x_0 = 2, v_0 = 0.$$

Is the system overdamped, critically damped, or underdamped?

Solution - First, we note $c^2 = 9$, while $4mk = 8$. So, $c^2 > 4mk$, and therefore the system is overdamped.

The differential equation modeling the system is:

$$\frac{1}{2}x'' + 3x' + 4x = 0,$$

which we can rewrite as:

$$x'' + 6x' + 8x = 0.$$

The characteristic equation for the ODE above is:

$$r^2 + 6r + 8 = (r + 4)(r + 2).$$

So, the roots are $r = -2$, and $r = -4$. These correspond with solutions e^{-4t} and e^{-2t} . So, the general solution to the ODE is:

$$x(t) = c_1e^{-4t} + c_2e^{-2t}.$$

The derivative of this solution is:

$$-4c_1e^{-4t} - 2c_2e^{-2t}.$$

If we plug in our initial conditions we get:

$$\begin{aligned}x(0) &= c_1 + c_2 = 2, \\v(0) &= -4c_1 - 2c_2 = 0.\end{aligned}$$

Solving this system gives us $c_1 = -2$ and $c_2 = 4$. So, our solution is:

$$x(t) = -2e^{-4t} + 4e^{-2t}.$$

Notes on Homework Problems

There are only four homework problems assigned from this section. The first, 3.4.1, is a very simple problem where you just plug some numbers into the period and frequency formulas.

Problem 3.4.5 is an interesting problem examining how the period of a pendulum changes when gravity decreases as you move away from the Earth. Note that for the change to be noticeable, you need to move a LONG way away from the Earth's surface.

Problems 3.4.18 and 3.4.21 explore different mass-spring-dashpot behaviors for different values of the relevant constants. Kind of like the three cases explored in this lecture.