

Practice Final Exam

Equations in One Variable

How many real number solutions are there for the following equations? Your answers will either be 0, 1, 2, or ∞ , if there are infinitely many solutions. Worth $\frac{1}{2}$ point each.

1.) $x^2 = 5$

2.) $\tan(x) = 17$

3.) $\sqrt{x} = -4$

4.) $\sin(x) = \frac{2}{3}$

5.) $e^x = 5$

6.) $\cos(x) = -2$

7.) $-x^2 + 2x - 3 = 0$

8.) $x^2 = -1$

9.) $\log_e(x) = -3$

10.) $\sin(x) = 4$

11.) $\sqrt{x} = 6$

12.) $e^x = 0$

13.) $x^2 = 0$

14.) $\cos(x) = -\frac{1}{2}$

15.) $x^2 - 4x + 1 = 0$

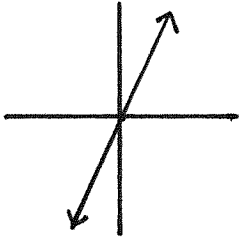
Linear Algebra

16.) Give the vector written as a ROW vector $\begin{pmatrix} 2 & 1 \\ -3 & 0 \end{pmatrix} \begin{pmatrix} 4 \\ -2 \end{pmatrix}$

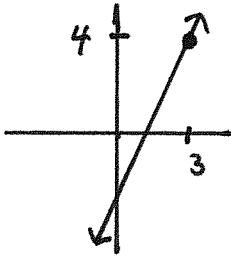
17.) Find the product $\begin{pmatrix} 2 & 1 \\ 0 & -4 \end{pmatrix} \begin{pmatrix} 1 & -3 \\ 5 & 0 \end{pmatrix}$

Conics and other solutions of equations in two variables

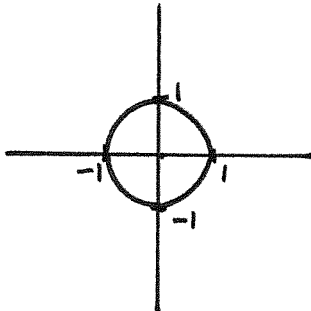
18.) Give the equation for a line of slope 2 that passes through the origin.



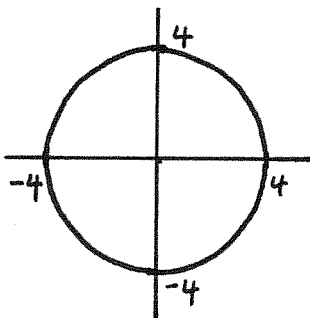
19.) Give the equation for a line of slope 2 that passes through the point (3, 4).



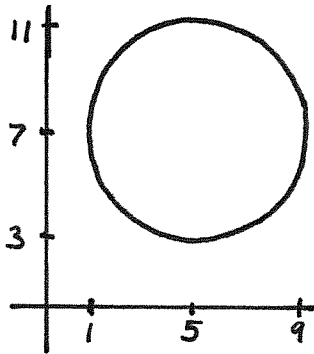
20.) Give the equation of the unit circle.



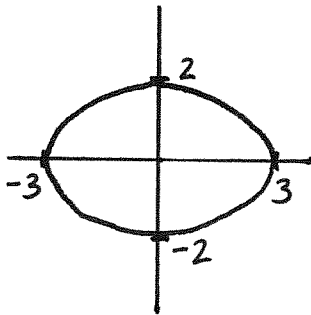
21.) Give the equation of the circle of radius 4 centered at the origin.



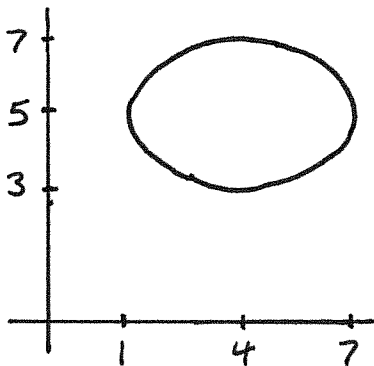
22.) Give the equation of the circle of radius 4 centered at the point (5, 7).



23.) Give the equation of the ellipse obtained by starting with the unit circle, and then scaling the x -axis by 3, and the y -axis by 2.



24.) Give the equation of the ellipse from 23.) shifted right by 4 and up by 5.



25.) Draw the set of solutions of the equation $xy = 1$.

26.) Draw the set of solutions of the equation $x^2 - y^2 = 1$.

27.) Draw the set of solutions of the equation $y^2 - x^2 = 1$.

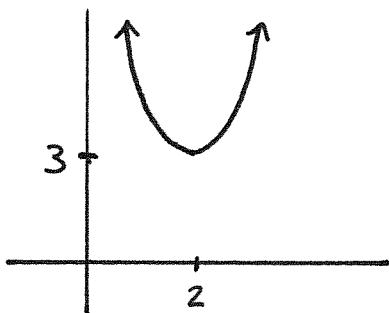
28.) Draw the set of solutions of the equation $y = x^2$.

29.) Draw the set of solutions of the equation $x = y^2$.

30.) $R_{-\pi/4} = \begin{pmatrix} \frac{1}{\sqrt{2}} & \frac{1}{\sqrt{2}} \\ -\frac{1}{\sqrt{2}} & \frac{1}{\sqrt{2}} \end{pmatrix}$ is the rotation of the plane by angle $-\frac{\pi}{4}$.

If $H \subseteq \mathbb{R}^2$ is the set of solutions of $xy = 1$, then draw $R_{-\pi/4}(H)$.

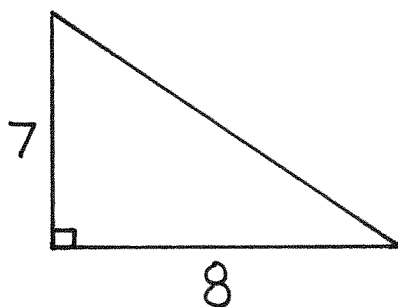
31.) Let P be the set of solutions of $y = x^2$ from #28. What's the equation for P shifted right by 2 and up by 3?



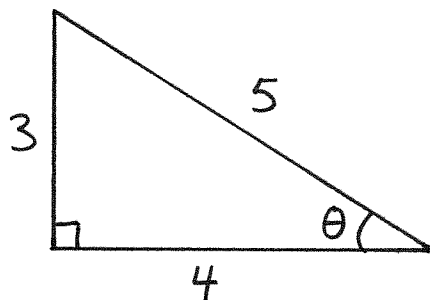
Trigonometry

32.) What is the distance between the points $(2, 5)$ and $(3, 8)$?

33.) Find the length of the unlabeled side of the triangle below.



34.) Find $\sin(\theta)$, $\cos(\theta)$, and $\tan(\theta)$ for the angle θ given below. (3 points.)



Match the functions with their graphs.

35.) $\sin(x)$

38.) $\sin\left(\frac{x}{2}\right)$

41.) $\cos(x)$

44.) $\frac{1}{2}\sin(x)$

36.) $\sin\left(x + \frac{\pi}{2}\right)$

39.) $\sin(x) + 1$

42.) $\sin\left(x - \frac{\pi}{2}\right)$

45.) $-\sin(x)$

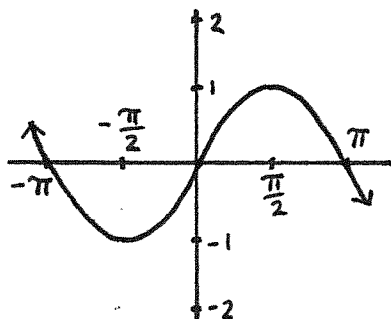
37.) $\sin(2x)$

40.) $\sin(x) - 1$

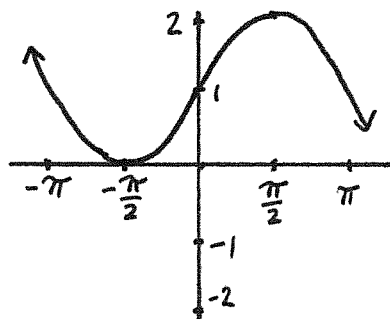
43.) $2\sin(x)$

46.) $\sin(-x)$

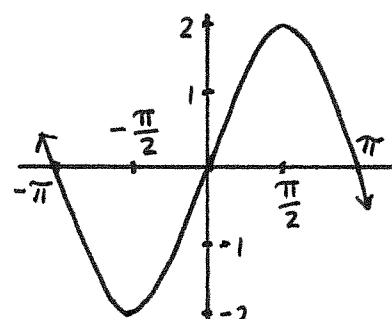
A.)



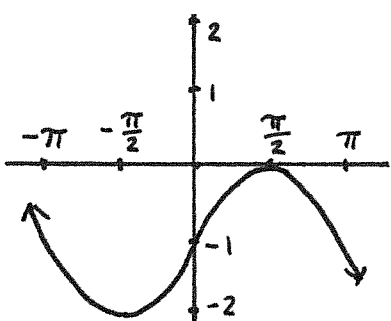
B.)



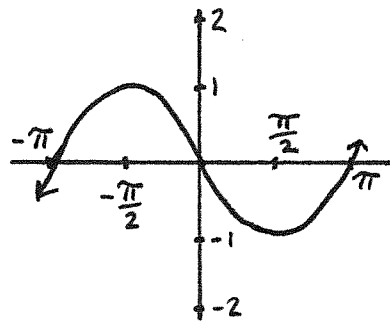
C.)



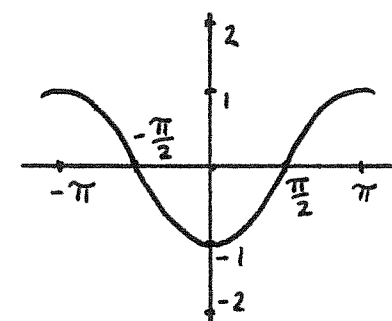
D.)



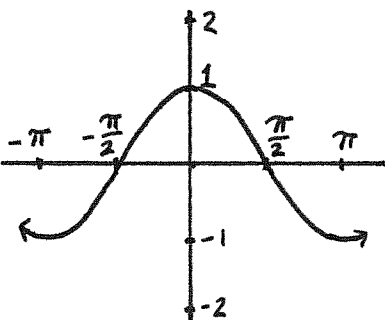
E.)



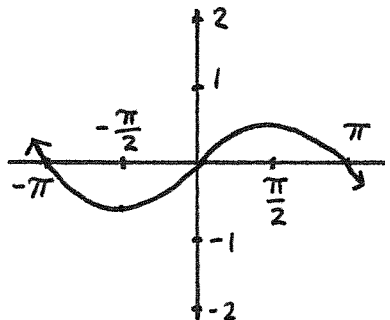
F.)



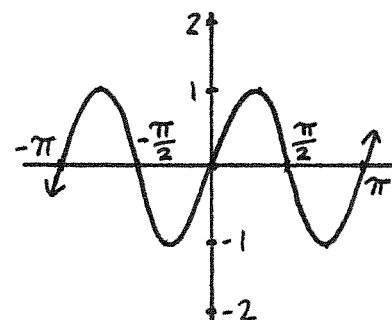
G.)



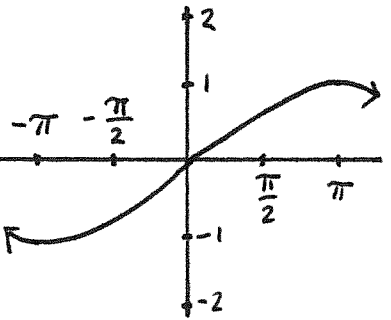
H.)



I.)



J.)

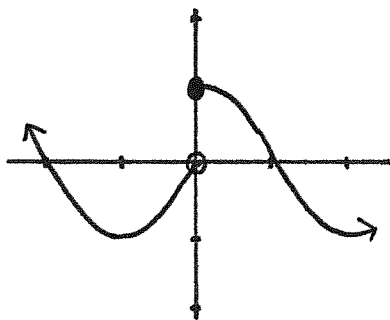


Match the functions with their graphs.

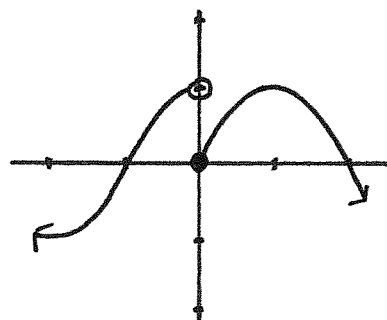
$$47.) f(x) = \begin{cases} \sin(x) & \text{if } x < 0; \\ \cos(x) & \text{if } x \geq 0. \end{cases}$$

$$48.) g(x) = \begin{cases} \cos(x) & \text{if } x < 0; \\ \sin(x) & \text{if } x \geq 0. \end{cases}$$

A.)



B.)



Find the values: 49.) $\arccos\left(\frac{1}{\sqrt{2}}\right)$ 50.) $\arcsin(-1)$ 51.) $\arctan(-1)$

52.) What's the Pythagorean Identity?

For #53-61, graph $\cos(x)$, $\sin(x)$, $\tan(x)$, $\sec(x)$, $\csc(x)$, $\cot(x)$, $\arccos(x)$, $\arcsin(x)$, and $\arctan(x)$.

Complex numbers

62.) Find $(2 + i3) + (4 + i5)$.

63.) Find $(2 + i3)(1 + i4)$.

64.) What's the norm of $7 + i3$.

65.) Write $5 + i2$ in polar coordinates.

66.) Find $2(\cos(3) + i \sin(3))4(\cos(8) + i \sin(8))$.

67.) Find $\left(\frac{1}{2} + i\frac{\sqrt{3}}{2}\right)^4$

68.) Find $\left(\frac{1}{\sqrt{2}} + i\frac{1}{\sqrt{2}}\right)^7$

69.) Draw a dot on the number $2\left(\cos\left(-\frac{\pi}{3}\right) + i \sin\left(-\frac{\pi}{3}\right)\right)$

70.) Draw an X on the number $3\left(\cos\left(\frac{\pi}{2}\right) + i \sin\left(\frac{\pi}{2}\right)\right)z$.
(The number z is drawn on the answer sheet.)

Equations in one variable

For #71-76, give the real number solutions of the equations. If there is no solution, explain why there is no solution. For at least one of the problems, the domain of the equation will play an important role. Worth 2 points each.

71.) $(\sqrt{x})^2 + \sqrt{x} - 6 = 0$

72.) $\log_e(x - 1) + \log_e(x + 3) = 0$

73.) $e^{2x-1} = -3$

$$74.) (x - 3)^2 = 4$$

$$75.) e^{2x+1}e^{3x-7} = 1$$

$$76.) (x + 1)(2x - 3) = (x + 1)(x - 4)$$

First Name: _____ Last Name: _____

1.) _____

16.) _____

2.) _____

3.) _____

17.) _____

4.) _____

18.) _____

5.) _____

19.) _____

6.) _____

20.) _____

7.) _____

21.) _____

8.) _____

22.) _____

9.) _____

23.) _____

10.) _____

24.) _____

11.) _____

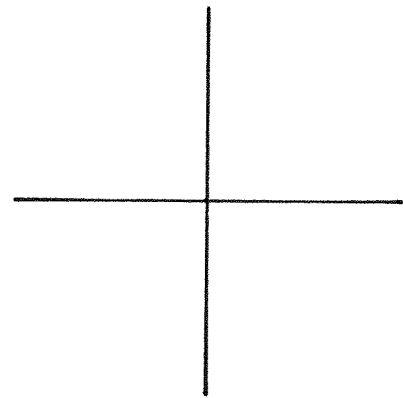
25.)

12.) _____

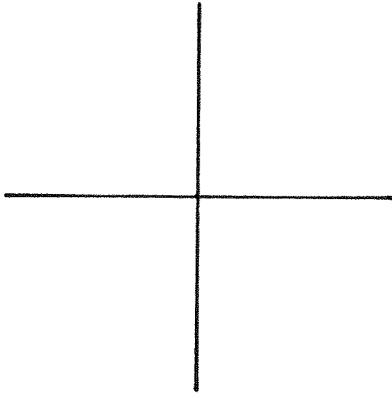
13.) _____

14.) _____

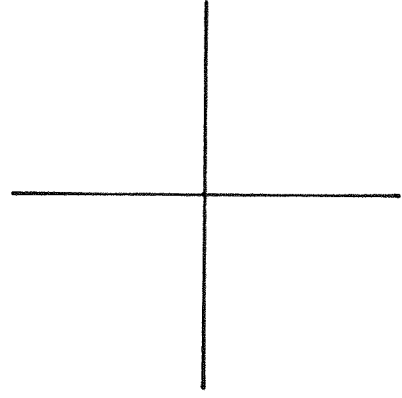
15.) _____



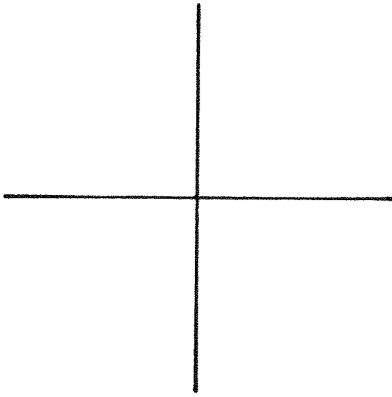
26.)



30.)



27.)



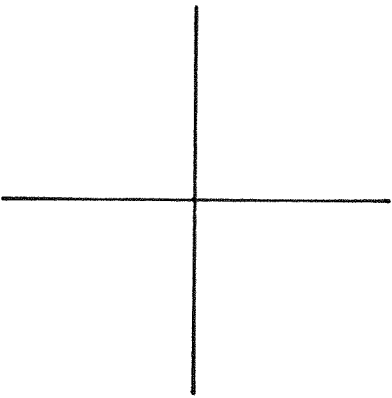
31.)

32.)

33.)

34.) $\sin(\theta) =$

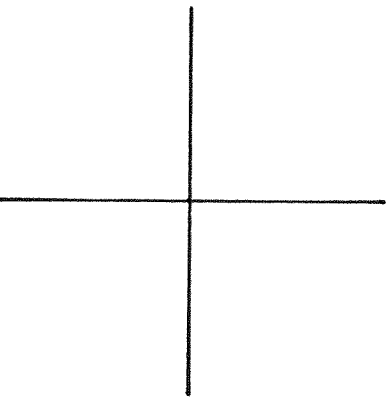
28.)



$\cos(\theta) =$

$\tan(\theta) =$

29.)



35.)

36.)

37.)

38.)

39.)

40.)

41.) _____ 47.) _____

42.) _____ 48.) _____

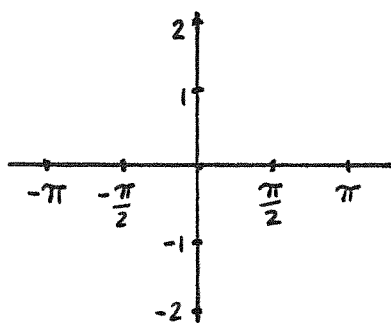
43.) _____ 49.) _____

44.) _____ 50.) _____

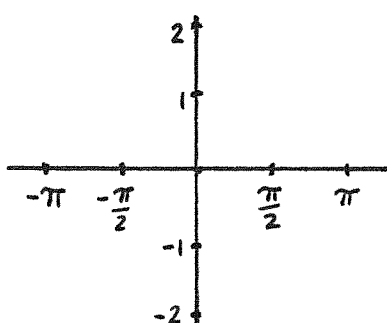
45.) _____ 51.) _____

46.) _____ 52.) _____

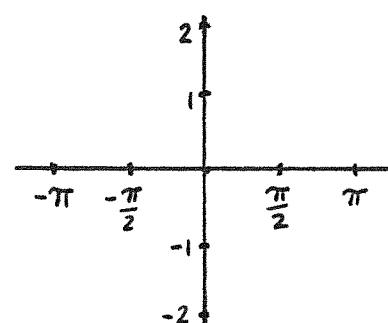
53.) $\cos(\theta)$



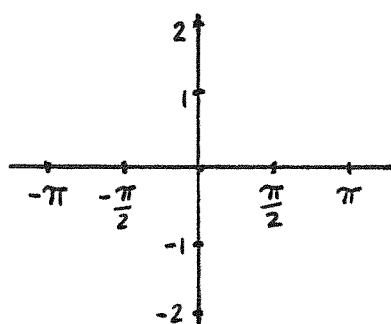
54.) $\sin(\theta)$



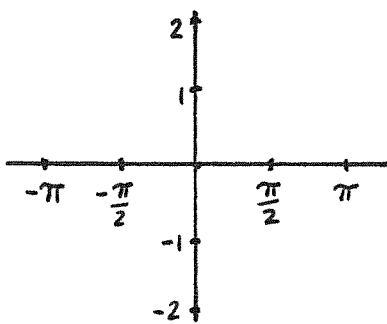
55.) $\tan(\theta)$



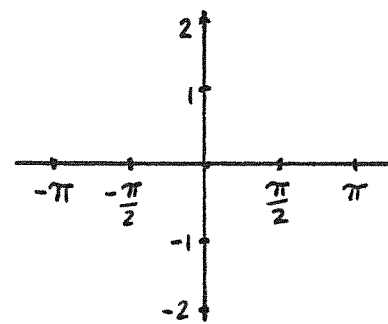
56.) $\sec(\theta)$



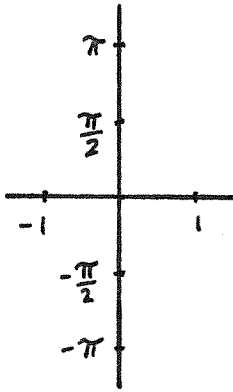
57.) $\csc(\theta)$



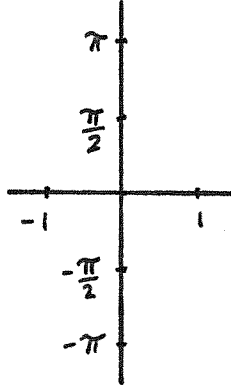
58.) $\cot(\theta)$



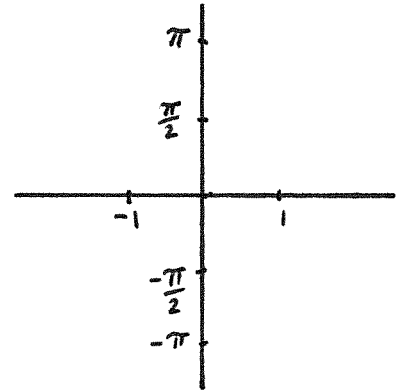
59.) $\arcsin(\theta)$



60.) $\arccos(\theta)$



61.) $\arctan(\theta)$



62.) _____

66.) _____

63.) _____

67.) _____

64.) _____

68.) _____

65.) _____

69.) and 70.)

