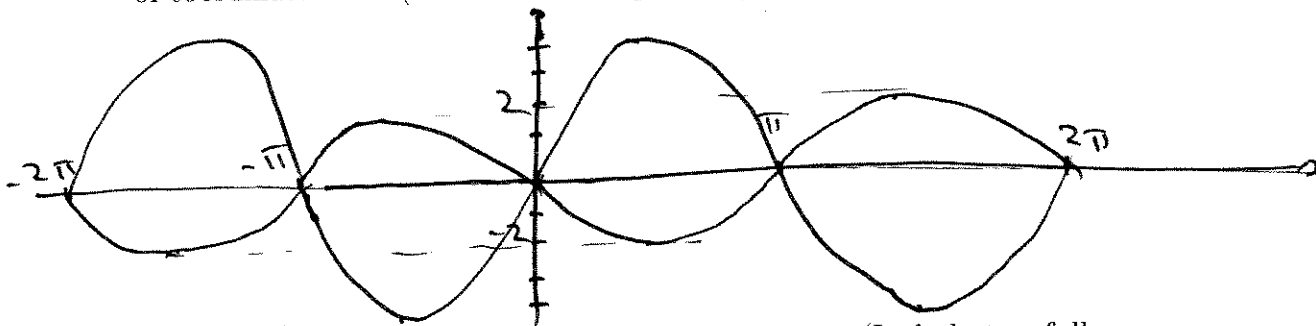


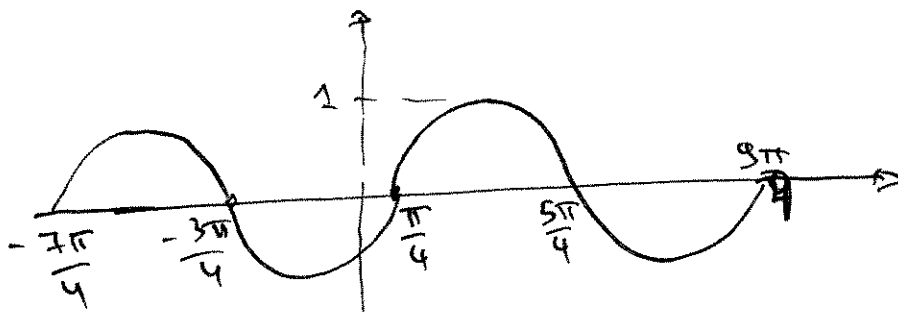
Solutions to Quiz III  
Math1060-02

**Problem 1.** (4 points) Graph  $f = -2 \sin x$  and  $g = 4 \sin x$  on the same set of coordinate axes. (Include two full periods.)

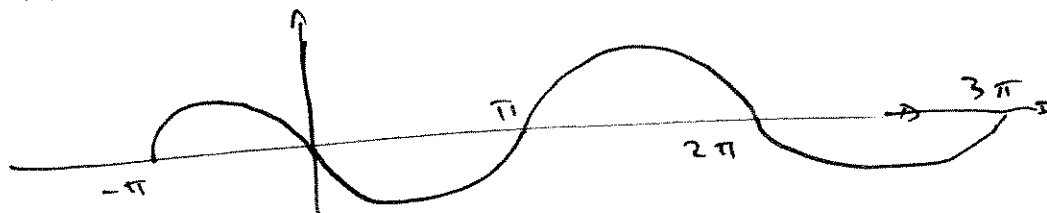


**Problem 2.** (4 points) Sketch the graph of the functions (Include two full periods.)

(a)  $y = \sin(x - \frac{\pi}{4})$



(b)  $y = \sin(x - \pi)$



**Problem 3.** (4 points) Use the graph to solve the equation on the interval  $[-2\pi, 2\pi]$

$\tan x = \sqrt{3}$

