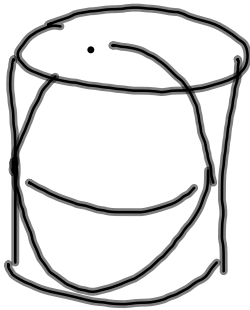


Ch 4

- 1) launched a ship alone
- 2) 8 books, only have 7
- 3) 96 sides
- 4) classical constructions
- 5) Diocetes
- 6) burning mirror

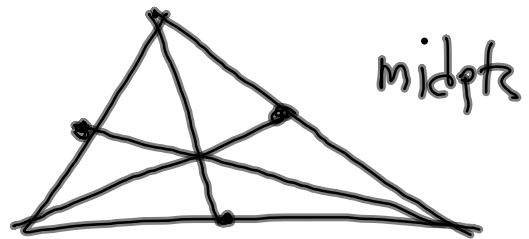
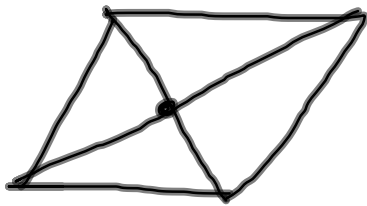
7)



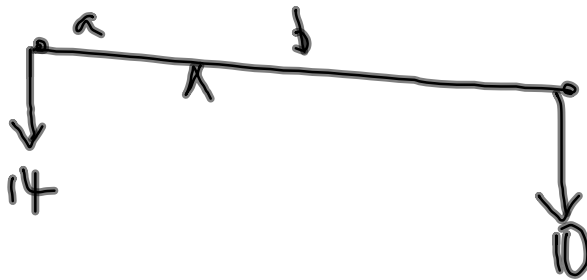
$$\begin{aligned} SA(\text{cyl}) &= 2\pi r \cdot 2r \\ &= 4\pi r^2 \\ &= SA(\text{sphere}) \end{aligned}$$

8) Cicero

1)



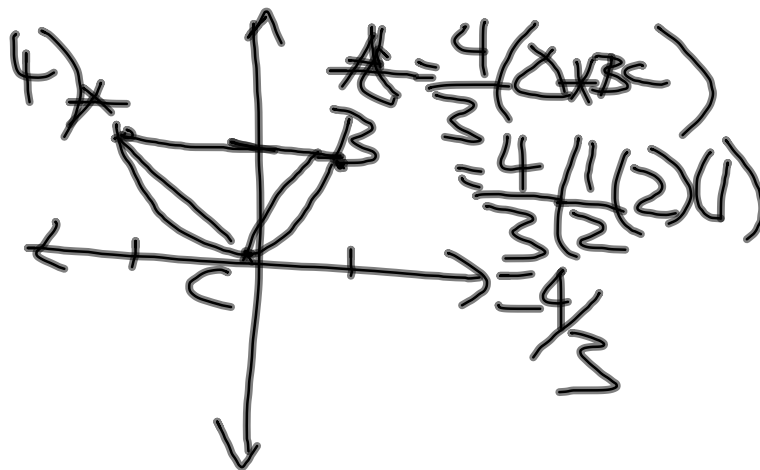
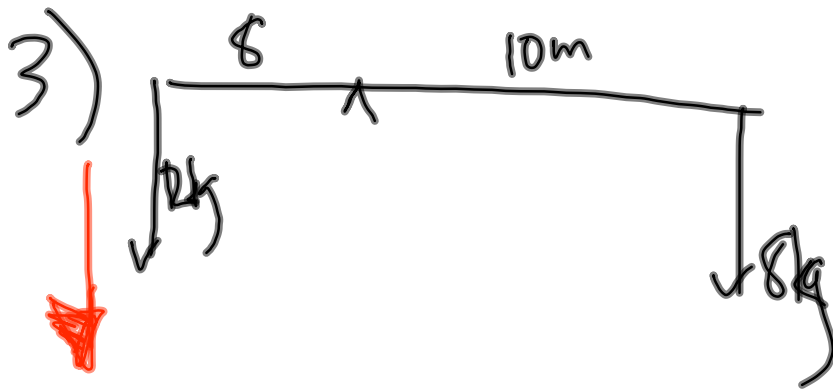
2)



$$\frac{a}{b} = \frac{10}{14} = \frac{5}{7}$$

$$\Rightarrow 7a = 5b$$

$$a + b = 10$$



$$A = \frac{4}{3} (\Delta ABC)$$

$$= \frac{4}{3} (1)(2)(1)$$

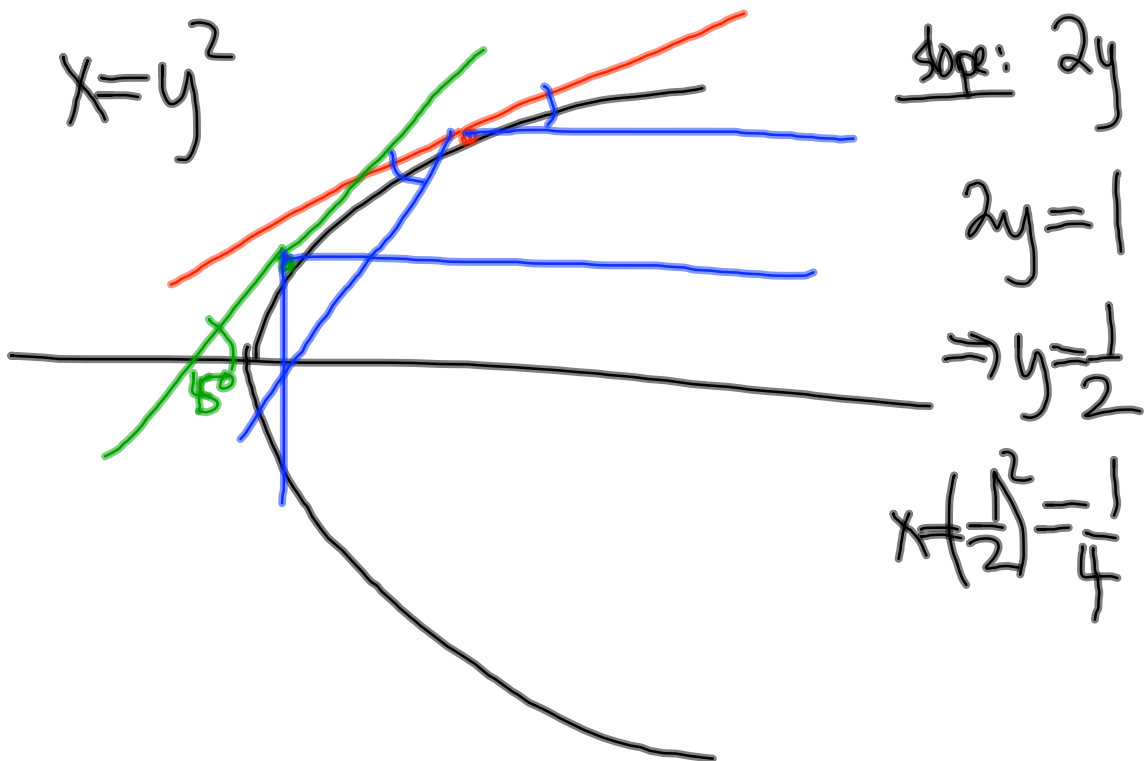
$$= \frac{4}{3}$$

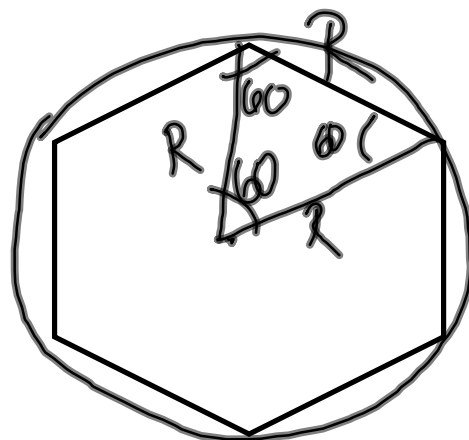
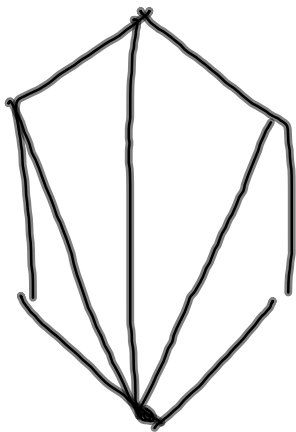
$$\int_{-2}^2 \sqrt{1-x^2} dx$$

$$= \left[x\sqrt{1-x^2} + \frac{1}{3}x^3 \right]_{-2}^2$$

$$= \frac{6}{2} - \frac{2}{2} - \left(\frac{6}{2} - \frac{2}{2} \right)$$

$$= \frac{4}{2}$$





6R

$$4 \cdot 180 = 720$$

$$720 / 6 = 120$$