

Academic Standing	Frequency	Proportion	Percentage
Freshman	6	0.127	12.7
Sophomore	13	0.276	27.6
Junior	12	0.255	25.5
Senior	16	0.340	34.0
<b>Total</b>	<b>47</b>	<b>1</b>	<b>100</b>

Table 1: Frequency Table of Academic Standing

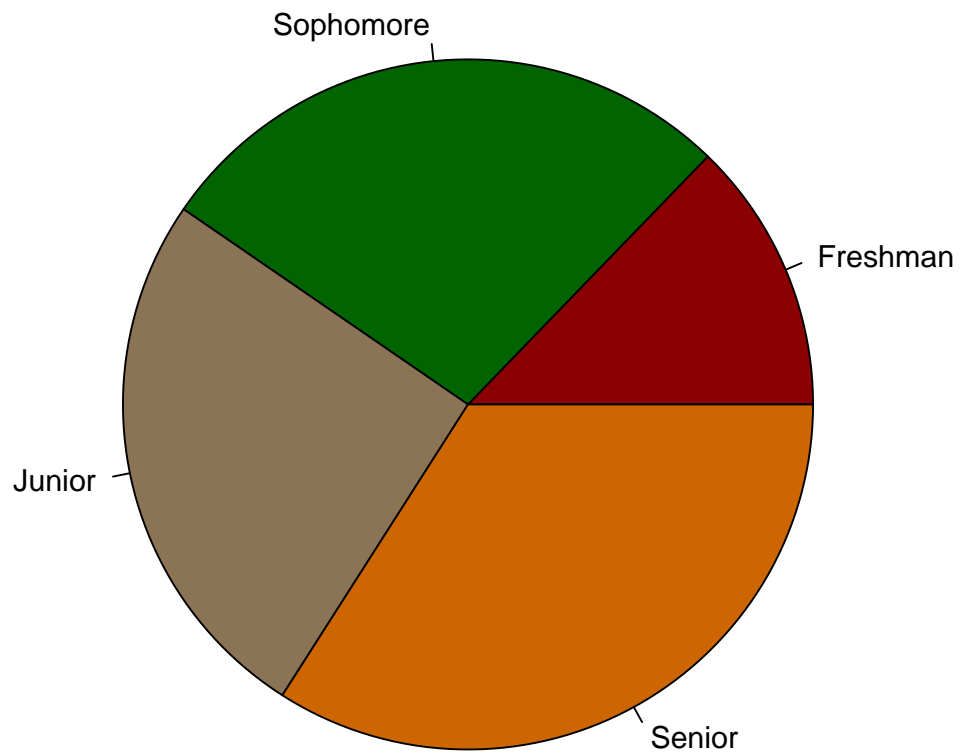


Figure 1: Pie Chart of Academic Standing

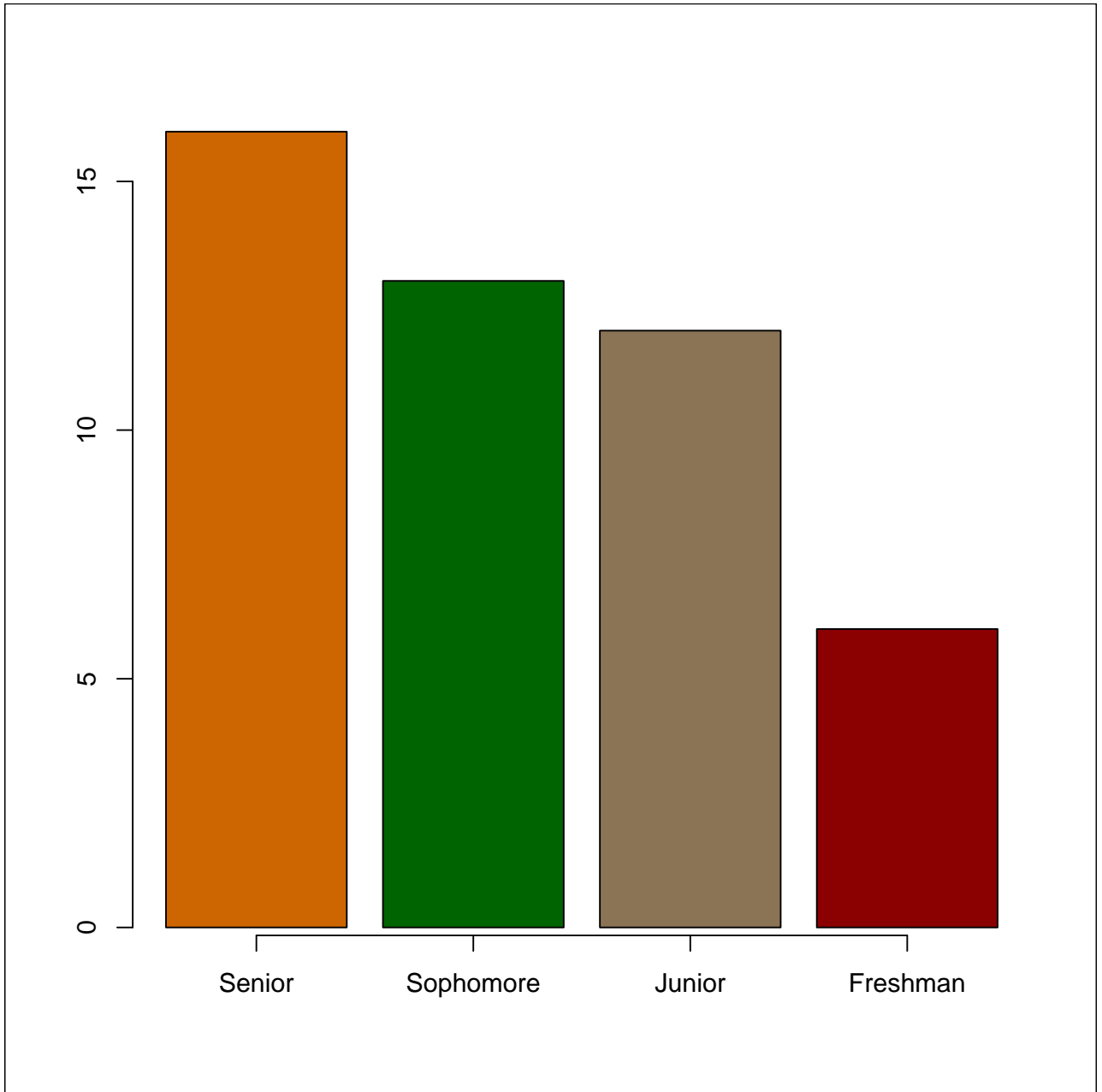
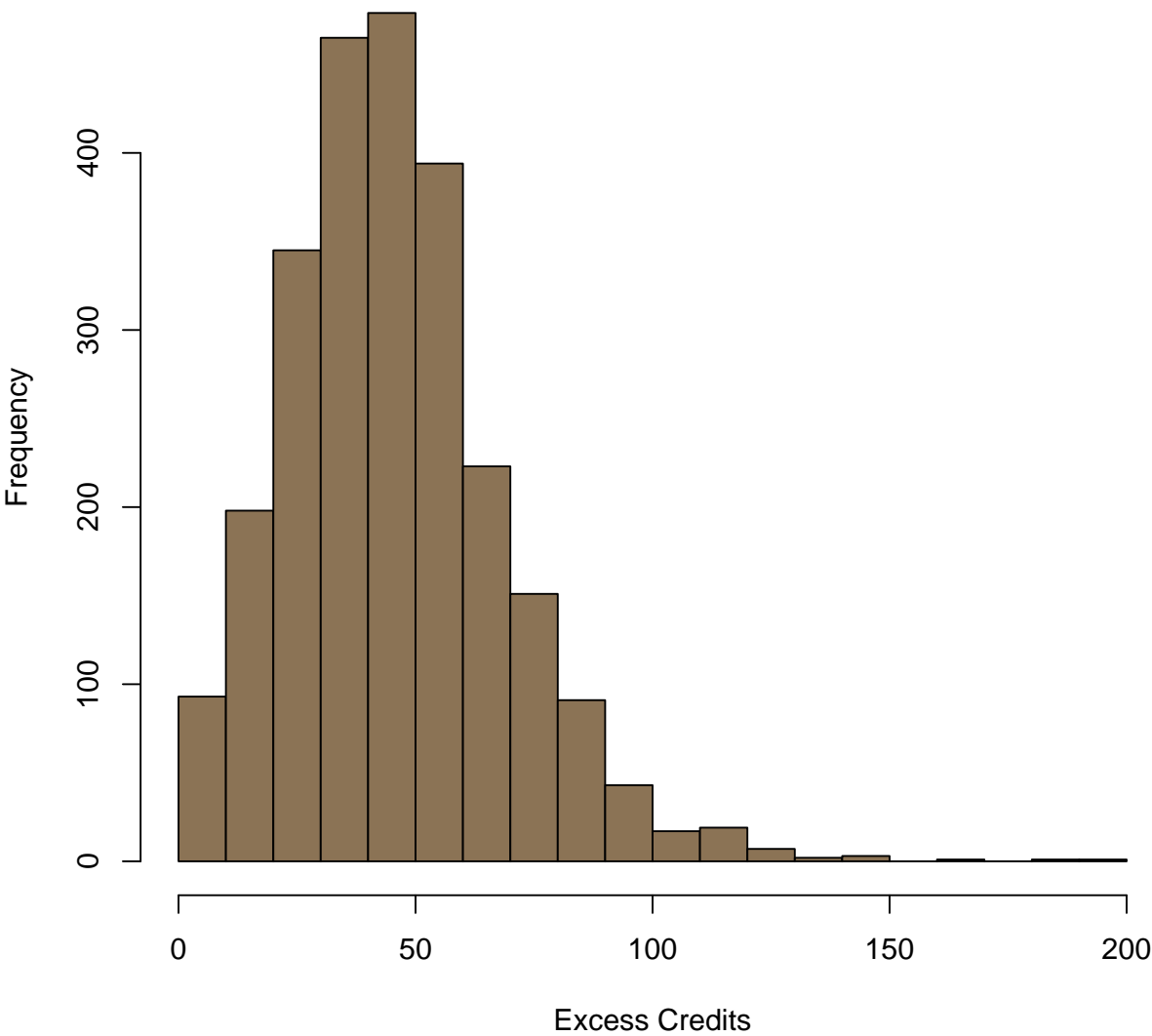


Figure 2: Bar Graph of Academic Standing

College of Engineering



Counts	93	198	345	465	479	394	223	151	91	43	17	19	7	2	3	0	1	0	1	1
Breaks	10	20	30	40	50	60	70	80	90	100	110	120	130	140	150	160	170	180	190	200

Figure 3: Histogram of Student Credit Hours

## College of Social and Behavioral Science

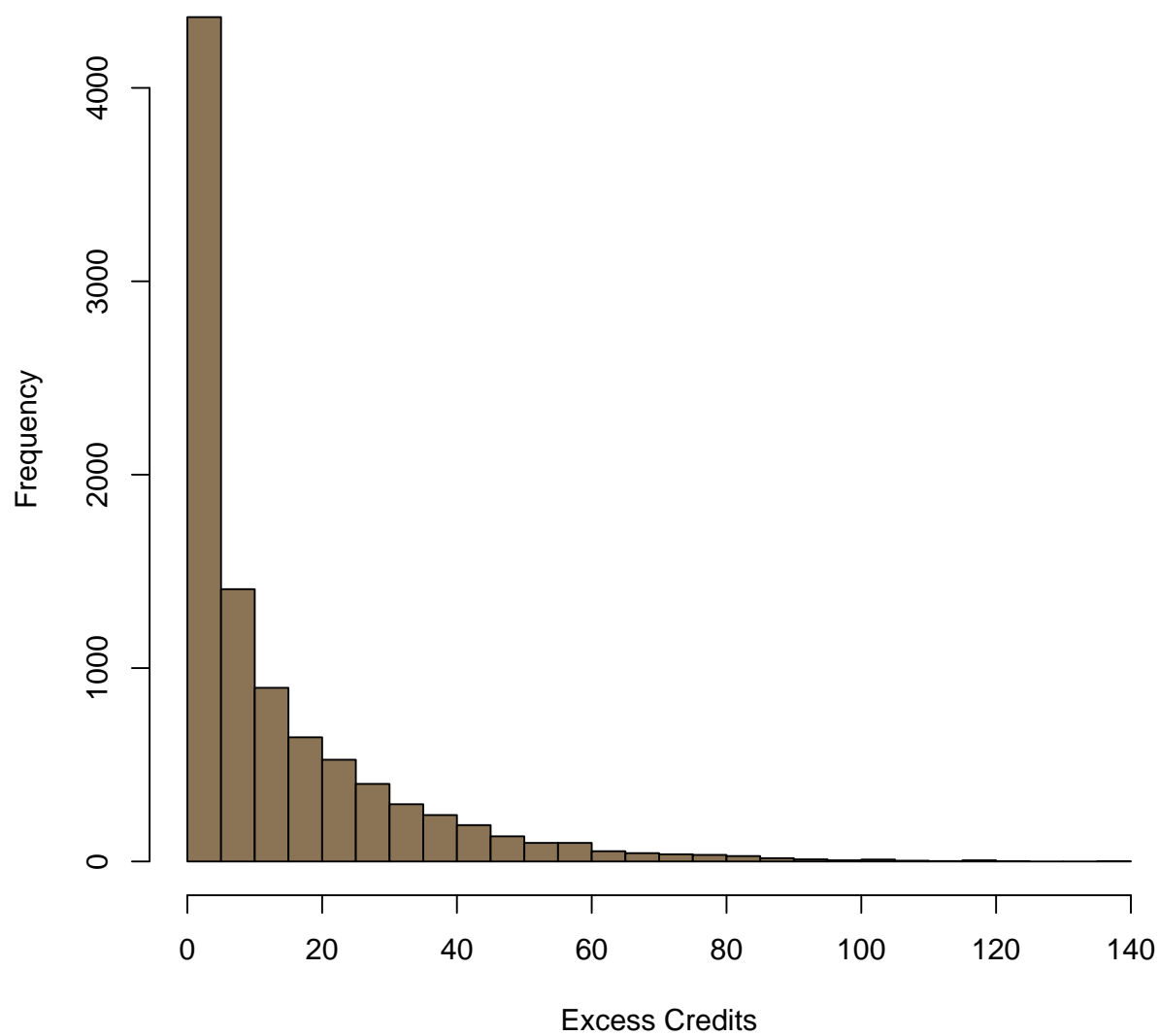


Figure 4: Histogram of Student Credit Hours

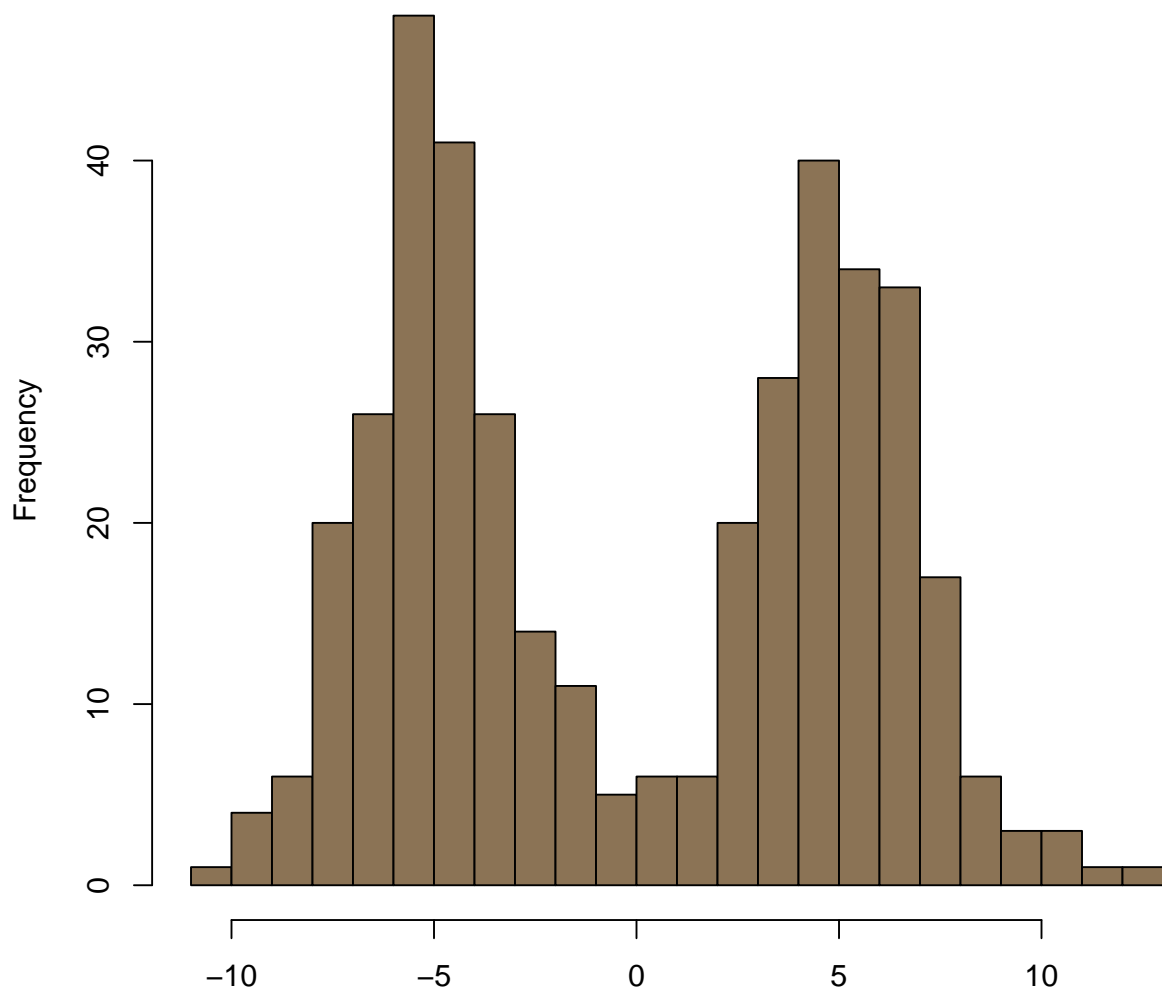


Figure 5: Example of Bimodal Data

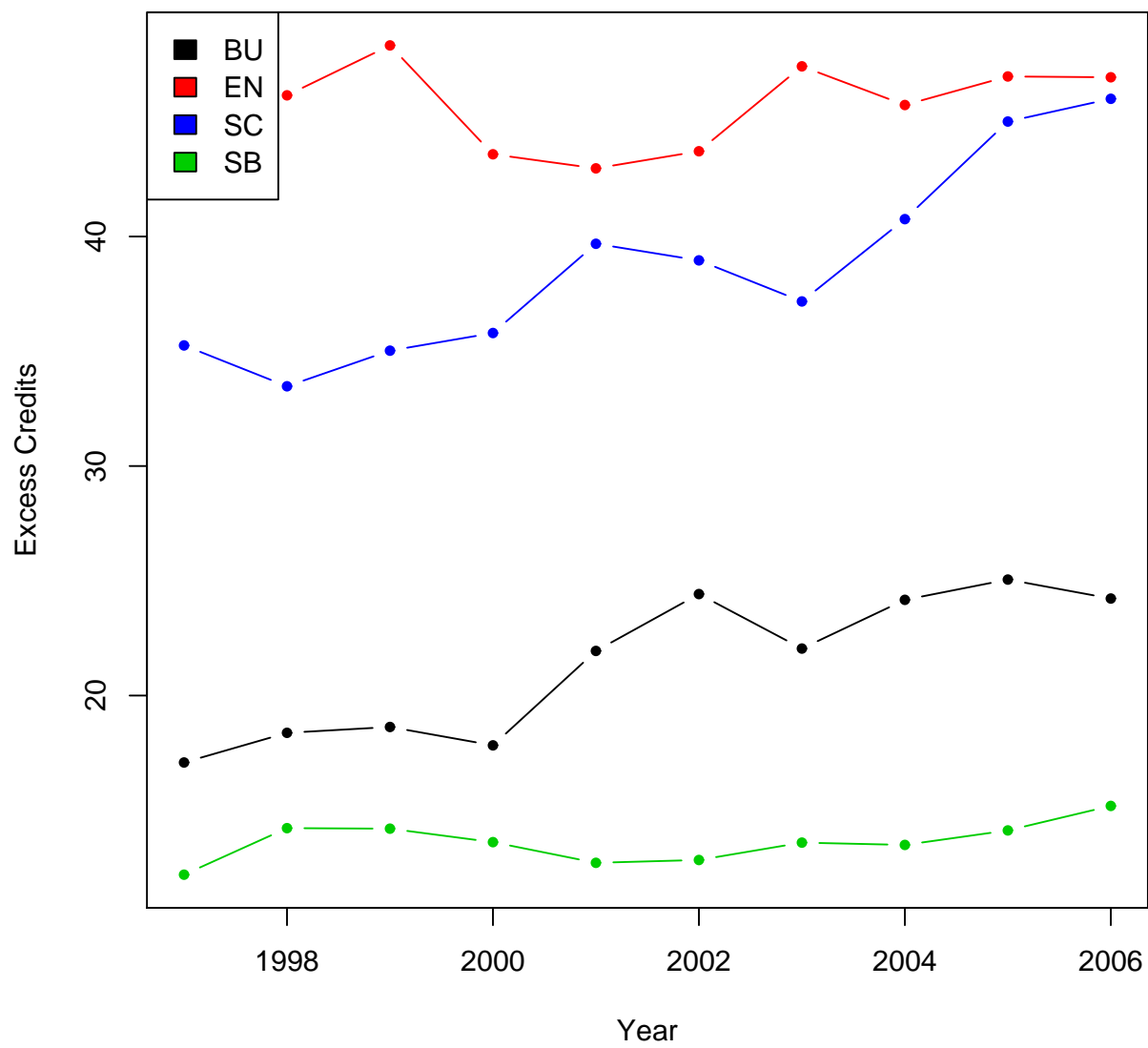


Figure 6: Average Excess Credits by College