

Mathematics Test 3

Information

First name: Last Name:

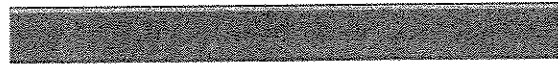


1



How long will Lucy have to wait before for her \$2,500 invested at 6% earns \$600 in simple interest?

- 2 years
- 3 years
- 4 years
- 5 years
- 6 years

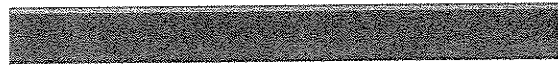


2



Grace has 16 jellybeans in her pocket. She has 8 red ones, 4 green ones, and 4 blue ones. What is the minimum number of jellybeans she must take out of her pocket to ensure that she has one of each color?

- 4
- 8
- 12
- 13
- 16

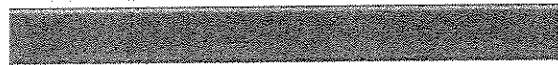


3



If $r = 5z$ then $15z = 3y$, then $r =$

- y
- 2y
- 5y
- 10y
- 15y



4



What is 35% of a number if 12 is 15% of a number?

- 5
- 12
- 28
- 33
- 62

5



A computer is on sale for \$1600, which is a 20% discount off the regular price. What is the regular price?

- \$1800
- \$1900
- \$2000
- \$2100
- \$2200

6



A car dealer sells a SUV for \$39,000, which represents a 25% profit over the cost. What was the cost of the SUV to the dealer?

- \$29,250
- \$31,200
- \$32,500
- \$33,800
- \$33,999

7



After having to pay increased income taxes this year, Edmond has to sell his BMW. Edmond bought the car for \$49,000, but he sold it for a 20% loss. What did Edmond sell the car for?

- \$24,200
- \$28,900
- \$35,600
- \$37,300
- \$39,200

8



If Sam can do a job in 4 days that Lisa can do in 6 days and Tom can do in 2 days, how long would the job take if Sam, Lisa, and Tom worked together to complete it?

- 0.8 days
- 1.09 days
- 1.23 days
- 1.65 days
- 1.97 days

9

?

Find $0.12 \div 12$

- 100
- 10
- 1
- 0.01
- 0.001

10

?

Divide x^5 by x^2

- x^{25}
- x^{10}
- x^7
- x^3
- $x^{2.5}$

11

?

Which of the following numbers could be described in the following way: an integer that is a natural, rational and whole number?

- 0
- 1
- 2.33
- 3
- none of the above

12

?

Find the mode of the following list of numbers: 2, 4, 6, 4, 8, 2, 9, 4, 3, 8,

- 2
- 3
- 4
- 5
- 6

13

?

In the fraction $\frac{3}{\quad}$, \quad may not be substituted by which of the following sets?

- {1, 2, 4}
- {-2, -3, -4}
- {1, 3, 7}
- {0, 10, 20}
- {1.8, 4.3}

14



Sarah needs to make a cake and some cookies. The cake requires $\frac{3}{8}$ cup of sugar and the cookies require $\frac{3}{5}$ cup of sugar. Sarah has $\frac{15}{16}$ cups of sugar. Does she have enough sugar, or how much more does she need?

- She has enough sugar.
- She needs $\frac{1}{8}$ of a cup of sugar.
- She needs $\frac{3}{80}$ of a cup of sugar.
- She needs $\frac{4}{19}$ of a cup of sugar.
- She needs $\frac{1}{9}$ of a cup of sugar.

15



At a company fish fry, $\frac{1}{2}$ in attendance are employees. Employees' spouses are $\frac{1}{3}$ of the attendance. What is the percentage of the people in attendance who are not employees or employee spouses?

- 10.5%
- 16.7%
- 25%
- 32.3%
- 38%

16



In a college, some courses contribute more towards an overall GPA than other courses. For example, a science class is worth 4 points; mathematics is worth 3 points; History is worth 2 points; and English is worth 3 points. The values of the grade letters are as follows, A=4, B=3, C=2, D=1, F=0. What is the GPA of a student who made a "C" in Trigonometry, a "B" in American History, an "A" in Botany, and a "B" in Microbiology?

- 2.59
- 2.86
- 3.08
- 3.33
- 3.67

17



There are 8 ounces in a $\frac{1}{2}$ pound. How many ounces are in $7\frac{3}{4}$ lbs?

- 12 ounces
- 86 ounces
- 119 ounces
- 124 ounces
- 138 ounces

18



If the value of x and y in the following fraction are both tripled, how does the value of the fraction change?

$$\frac{XZ}{Y}$$

- increases by half
- decreases by half
- triples
- doubles
- remains the same

19



What is the next number in the following pattern? $1, \frac{1}{2}$

$, \frac{1}{4}, \frac{1}{8}, \text{---}$

- $\frac{1}{10}$
- $\frac{1}{12}$
- $\frac{1}{14}$
- $\frac{1}{15}$
- $\frac{1}{16}$

20



Of the following units which would be more likely used to measure the amount of water in a bathtub?

- kilograms
- liters
- milliliters
- centigrams
- volts

21



If a match box is 0.17 feet long, what is its length in inches the most closely comparable to the following?

- $5 \frac{1}{16}$ inch highlighter

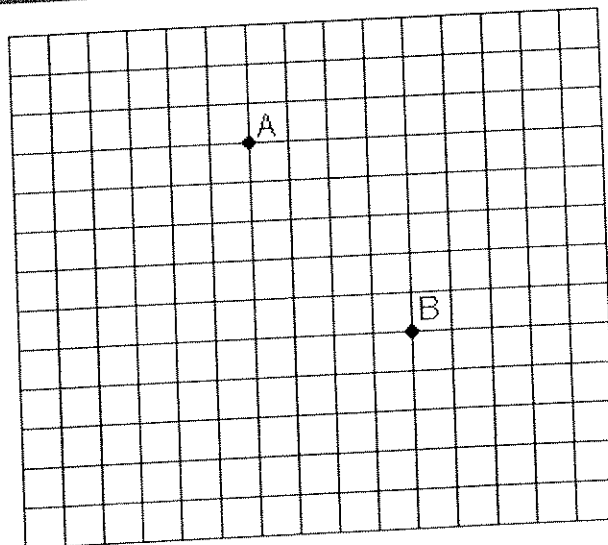
- $3 \frac{1}{8}$ inch jewelry box
- $2 \frac{3}{4}$ inch lipstick
- $2 \frac{3}{16}$ inch staple remover
- $4 \frac{1}{2}$ inch calculator

22

Which of the following fractions is the equivalent of 0.5%?

- $\frac{1}{20}$
- $\frac{1}{200}$
- $\frac{1}{2000}$
- $\frac{1}{5}$
- $\frac{1}{500}$

23



In the graph below, no axes or origin is shown. If point B's coordinates are (10,3), which of the following coordinates would most likely be A's?

- (17, -2)
- (10, 6)
- (6, 8)
- (-10, 3)
- (-2, -17)

24

Over the course of a week, Fred spent \$28.49 on lunch. What was the average cost per day?

- \$4.07
- \$3.57
- \$6.51

- \$2.93
- \$5.41

25



Of the following units, which would be most likely to measure the amount of sugar needed in a recipe for 2 dozen cookies?

- degrees Celsius
- milliliters
- quarts
- kilograms
- cups

26



Jim has 5 pieces of string. He needs to choose the piece that will be able to go around his 36-inch waist. His belt broke, and his pants are falling down. The piece needs to be at least 4 inches longer than his waist so he can tie a knot in it, but it cannot be more than 6 inches longer so that the ends will not show from under his shirt. Which of the following pieces of string will work the best?

- $3\frac{4}{5}$ feet
- $3\frac{2}{3}$ feet
- $3\frac{3}{8}$ feet
- $3\frac{1}{4}$ feet
- $2\frac{1}{2}$ feet

27



After purchasing a flat screen television for \$750, John realizes that he got a great deal on it and wishes to sell it for a 15% profit. What should his asking price be for the television?

- \$800.30
- \$833.60
- \$842.35
- \$862.50
- \$970.25

28



If 300 jellybeans cost you x dollars. How many jellybeans can you purchase for 50 cents at the same rate?

- $150/x$

- 150x
- 6x
- $\frac{x}{6}$
- 1500x

29



If 6 is 24% of a number, what is 40% of the same number?

- 8
- 10
- 15
- 20
- 25

30



Lee worked 22 hours this week and made \$132. If she works 15 hours next week at the same pay rate, how much will she make?

- \$57
- \$90
- \$104
- \$112
- \$122

31



The last week of a month a car dealership sold 12 cars. A new sales promotion came out the first week of the next month and the sold 19 cars that week. What was the percent increase in sales from the last week of the previous month compared to the first week of the next month?

- 58%
- 119%
- 158%
- 175%
- 200%

32



If $8x + 5x + 2x + 4x = 114$, the $5x + 3 =$

- 12
- 25
- 33
- 47
- 86

?

If two planes leave the same airport at 1:00 PM, how many miles apart will they be at 3:00 PM if one travels directly north at 150 mph and the other travels directly west at 200 mph?

- 50 miles
- 100 miles
- 500 miles
- 700 miles
- 1,000 miles

34

?

What is the cost in dollars to steam clean a room W yards wide and L yards long if the steam cleaners charge 10 cents per square foot?

- $0.9WL$
- $0.3WL$
- $0.1WL$
- $9WL$
- $3WL$

35

?

Find 8.23×10^9

- 0.00000000823
- 0.000000823
- 8.23
- 8230000000
- 823000000000

36

?

During a 5-day festival, the number of visitors tripled each day. If the festival opened on a Thursday with 345 visitors, what was the attendance on that Sunday?

- 345
- 1,035
- 1,725
- 3,105
- 9,315

37

?

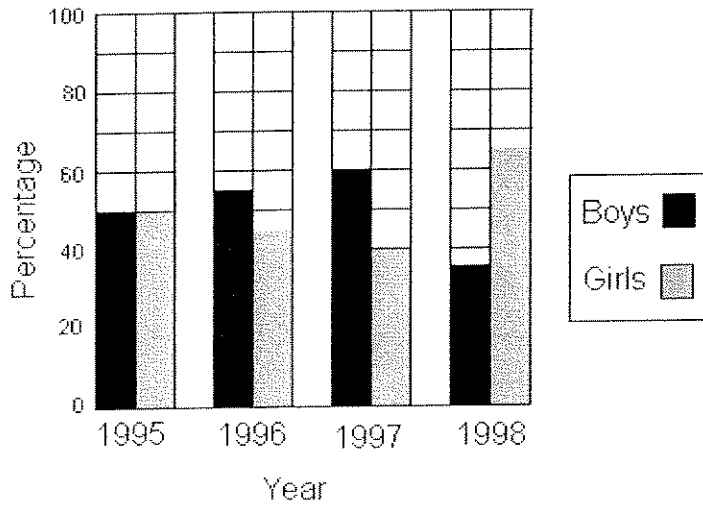
Which of the following has the least value?

- 0.27
- $\frac{1}{4}$

- 3/8
- 2/11
- 11%



Percentage of Boys vs. Girls in Attendance at a National Youth Convention



Total Number in Attendance at Nation Youth Convention

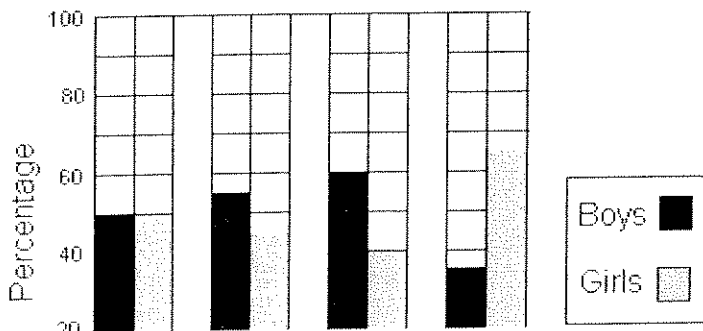
Year	Number
1995	716
1996	1108
1997	1520
1998	2244

How many boys attended the 1995 convention?

- 358
- 390
- 407
- 540
- 716



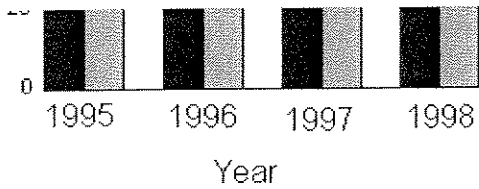
Percentage of Boys vs. Girls in Attendance at a National Youth Convention



Total Number in Attendance at Nation Youth Convention

Year	Number
1995	716
1996	1108
1997	1520
1998	2244

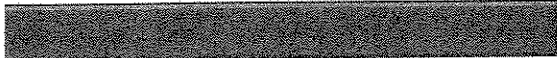
Which year did the same number of boys and girls attend the conference?



- 1995
- 1996
- 1997
- 1998
- None



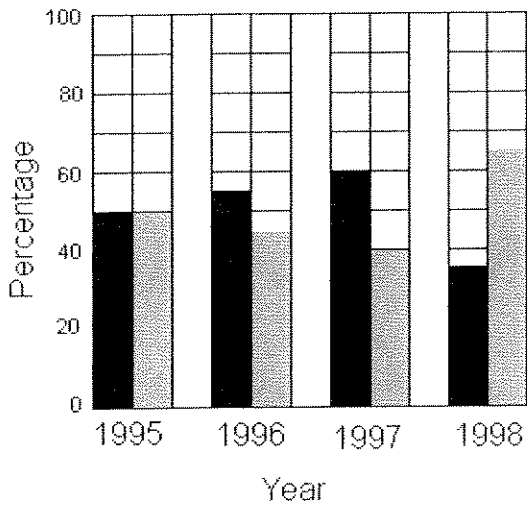
40



40



Percentage of Boys vs. Girls in Attendance at a National Youth Convention



Total Number in Attendance at Nation Youth Convention

Year	Number
1995	716
1996	1108
1997	1520
1998	2244

Which two years did the least number of boys attend the convention?

- 1995 and 1996
- 1995 and 1998
- 1996 and 1997
- 1997 and 1994
- 1997 and 1998



40

