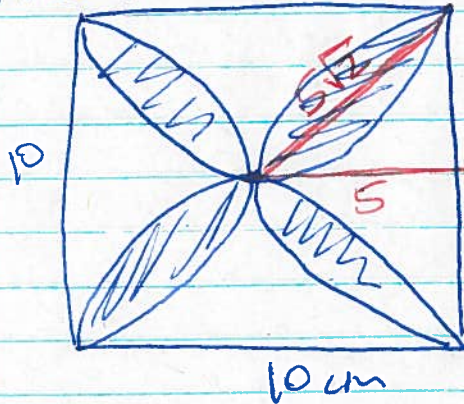
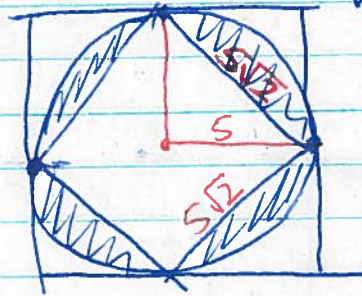


Area of shaded here = 2 \* area of shaded here



|||



Area = area of  
circle w/ radius 5  
- area of square  
w/ side length  $5\sqrt{2}$

$$\Rightarrow A = 2(\pi(5^2) - (5\sqrt{2})^2)$$

$$A = 2(25\pi - 50) = (50\pi - 100) \text{ cm}^2$$

∩