




Undergraduate Research Opportunities

pre-REU 2021





REU NSF (National Science Foundation)

- REU programs by subject, i.e. Astronomical Sciences, Ocean Sciences, **Mathematical Sciences**, etc.
 - Most programs run during May – July
 - Applications are **due** February – March, but it could be earlier
 - Submit:
 - 1) Statement of interest
 - 2) Transcripts
 - 3) **Two reference letters**
- There are too many options, discuss with an advisor possible programs
- Link: https://www.nsf.gov/crssprgm/reu/reu_search.jsp



IPAM (Institute for Pure & Applied Mathematics)

- Students research programs (not an REU, but is research experience. Funding comes from industry)
 - Undergraduate students may apply to Research in Industrial Projects for Students
 - Applications are usually open in **November**
 - The programs usually run May-July or June-August
 - Accept applicants who will complete their bachelor's degree between December and June
 - **Application requires:**
 - **Recommendation letters**
 - **Resume/CV**
 - **Transcript(s)**
- <http://www.ipam.ucla.edu/programs/student-research-programs/>
- 
- 



ICERM

(The Institute for Computational and Experimental Research in Mathematics)

- Some of the programs are research for undergraduates, but also summer schools and workshops
- Deadline: February
- Required:
 - Personal Statement
 - Two reference letters

→ <https://icerm.brown.edu/programs/>

Other places

SAMSI (The Statistical and Applied Mathematical Sciences Institute)

- Organize Workshops for undergraduate level
- Deadline: Mid March
- Dates: Usually a couple of days mid May
- <https://www.samsi.info/programs-and-activities/2019-2020-education-and-outreach-programs-and-workshops/>

MBI (Mathematical Biosciences Institute)

- Structured program: Bootcamp, mentor research experience and Capstone Week
- Mid June until early August
- <https://mbi.osu.edu/education/summer-reu-program>




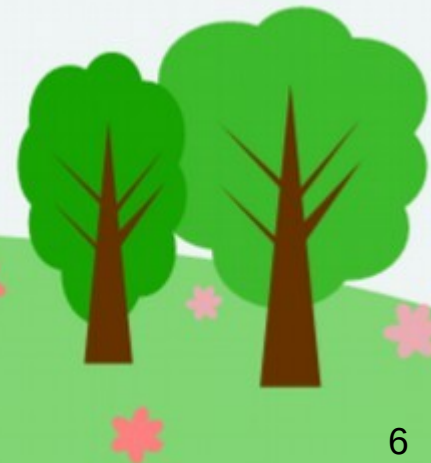
Other places

Summer Program in Biostatistics & Computational Biology

- Relates math, statistics, big data
- <https://www.hsph.harvard.edu/biostatistics/diversity/summer-program/>

Summer math institute Cornell

- 
- <https://pi.math.cornell.edu/~smi/>
 - Not an REU
 - Dates: June-August



Other places

DIMACS (Center for Discrete Mathematics and Theoretical Computer Science)

- This is an REU that runs every summer
- Requirements:
 - ✓ Resume
 - ✓ Statement
 - ✓ Two recommendation letters from faculty
 - ✓ Short list of projects that interest you
- June - August
- <http://reu.dimacs.rutgers.edu/>



Math Associations

AMS (American Mathematical Society)

- Some opportunities are posted their website
- <http://www.ams.org/opportunities/>
- Creators of the famous
 - <https://www.mathprograms.org/db>
 - <https://www.mathjobs.org/jobs>

SIAM (Society for Industrial and Applied Mathematics)

- Some information for undergraduates in the link:
- <https://www.siam.org/students-education/resources/for-undergraduate-students>
- Their website has resources to find internships:
<https://evoq-eval.siam.org/careers/internships>



PCMI (Park City Mathematical Institute)

- Undergraduate Summer School
- <https://www.ias.edu/pcmi>



Questions?