

Total 12 points

Please show all your work.

1. (8 pts) Data set: credit hours for Fall 2013 for a sample students enrolled in Math 1040:

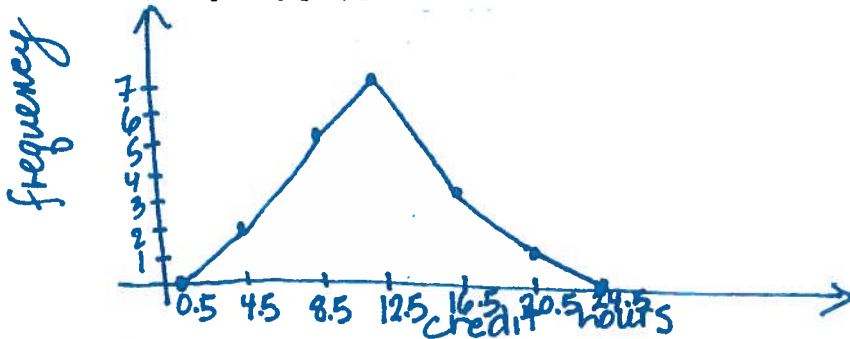
16 12 10 13 14 10 12 3 8 7 13 15 16 14 7 21 6 12

class width = $\frac{21-3}{5}$
 $= 3.6 \rightarrow 4$

Construct a frequency distribution table for the data set using 5 classes.

Class	Frequency	Midpoint	Relative frequency	Cumulative Frequency
3-6	2	4.5	$2/18 = 0.111$	2
7-10	5	8.5	$5/18 = 0.278$	7
11-14	7	12.5	0.389	14
15-18	3	16.5	0.167	17
19-22	1	20.5	0.056	18
	<u>18</u>			

Construct a frequency polygon.



2. (4 pts) Use a Pareto chart to display the data:

U.S. sporting goods sales (in billions of dollars) can be classified in four areas:

Areas	\$(in billions)
Clothing	11.7
Equipment	24.0
Recreational transport	38.5
Footwear	15.7

